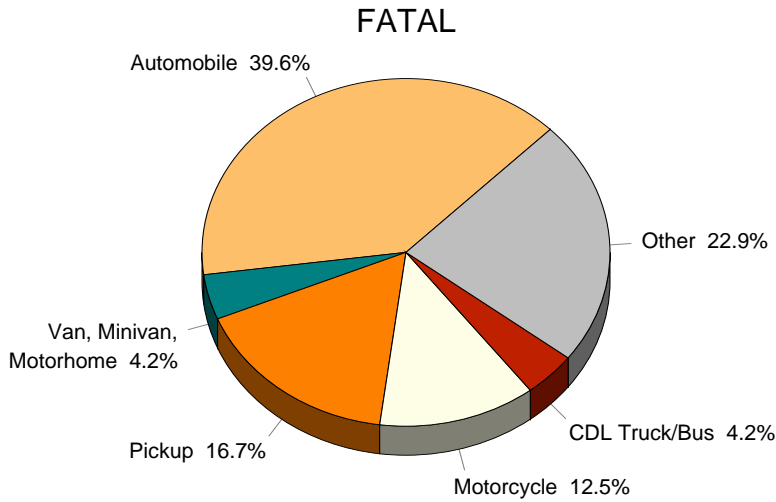
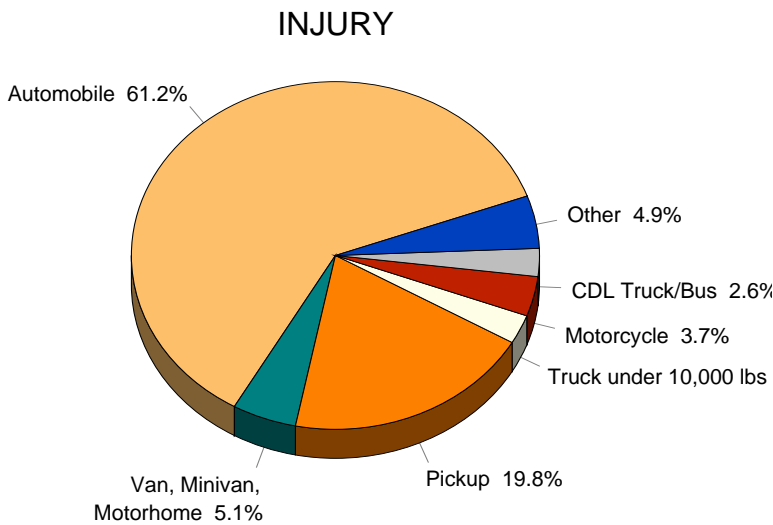




UPPER PENINSULA VEHICLE TYPES IN CRASHES BY CRASH SEVERITY



The top chart shows that 56.3 percent of vehicles involved in fatal crashes in the Upper Peninsula are automobiles or pickups. Van/minivan/motorhome has a fatal crash involvement of 4.2 percent.



Special Note:
"Other" consists of moped, go-cart, snowmobile, off-road vehicle, other, and unknown.

As with fatal crashes, injury and property damage only (PDO) crashes are represented primarily by cars and pickups.

PROPERTY DAMAGE ONLY

