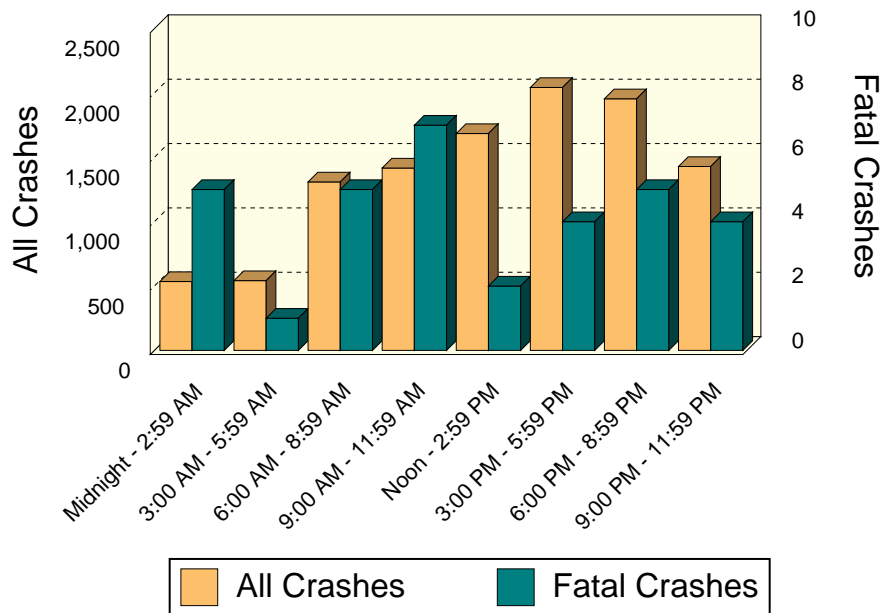




UPPER PENINSULA TIME AND SEVERITY

TIME OF DAY	All Crashes		Fatal Crashes		Injury Crashes			PDO Crashes
	Number	% of Total	Number	% of Fatal	A	B	C	
Midnight - 2:59 AM	535	4.9	5	15.2	24	45	37	424
3:00 AM - 5:59 AM	542	4.9	1	3.0	7	23	30	481
6:00 AM - 8:59 AM	1,309	11.9	5	15.2	23	42	77	1,162
9:00 AM - 11:59 AM	1,417	12.9	7	21.2	46	59	145	1,160
Noon - 2:59 PM	1,685	15.3	2	6.1	49	70	183	1,381
3:00 PM - 5:59 PM	2,043	18.6	4	12.1	58	87	183	1,711
6:00 PM - 8:59 PM	1,955	17.8	5	15.2	25	67	117	1,741
9:00 PM - 11:59 PM	1,429	13.0	4	12.1	18	40	61	1,306
Unknown	75	0.7	0	0.0	2	1	2	70
Total	10,990	100.0	33	100.0	252	434	835	9,436

Time and Severity



In the Upper Peninsula, all crash frequencies peak in the early evening, then drop off until 6:00 AM (the morning rush hour).