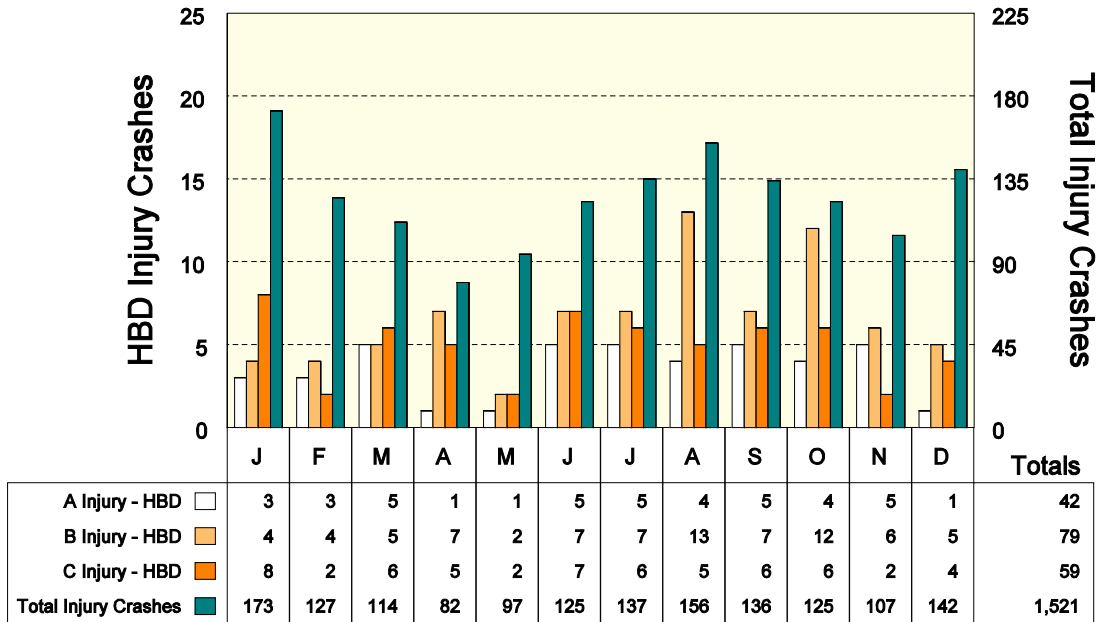




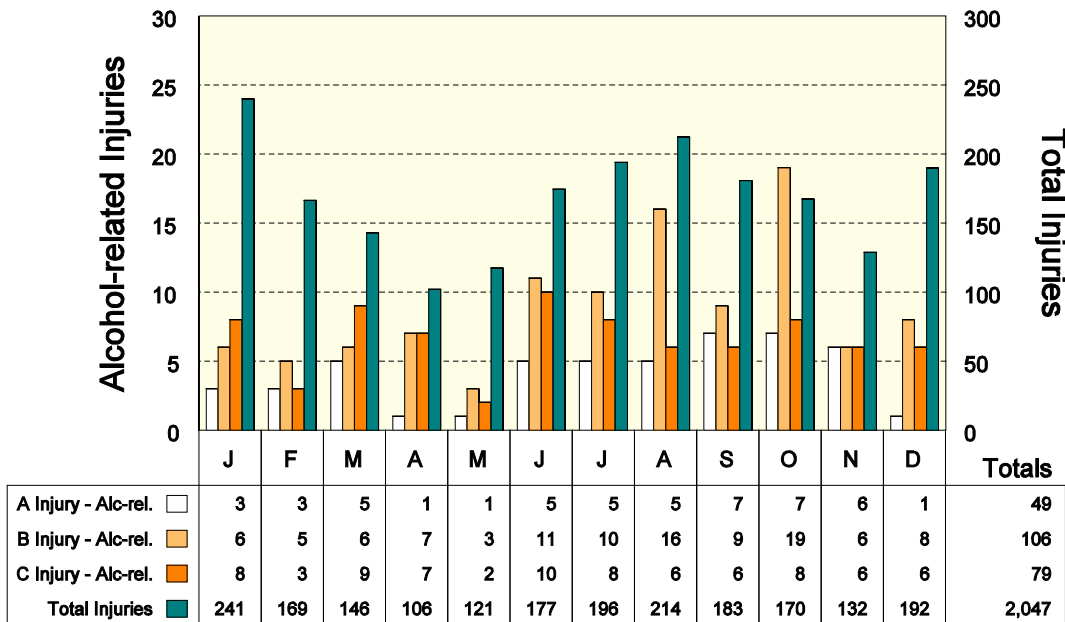
## UPPER PENINSULA ALCOHOL INVOLVEMENT IN INJURY CRASHES

Alcohol involvement in injury crashes is an important indicator of the alcohol impaired driving problem. In 2009, the highest number of HBD injury crashes occurred in August and October (22). The highest proportion of HBD injury crashes also occurred in October (17.6%).

### HBD Injury Crashes by Month



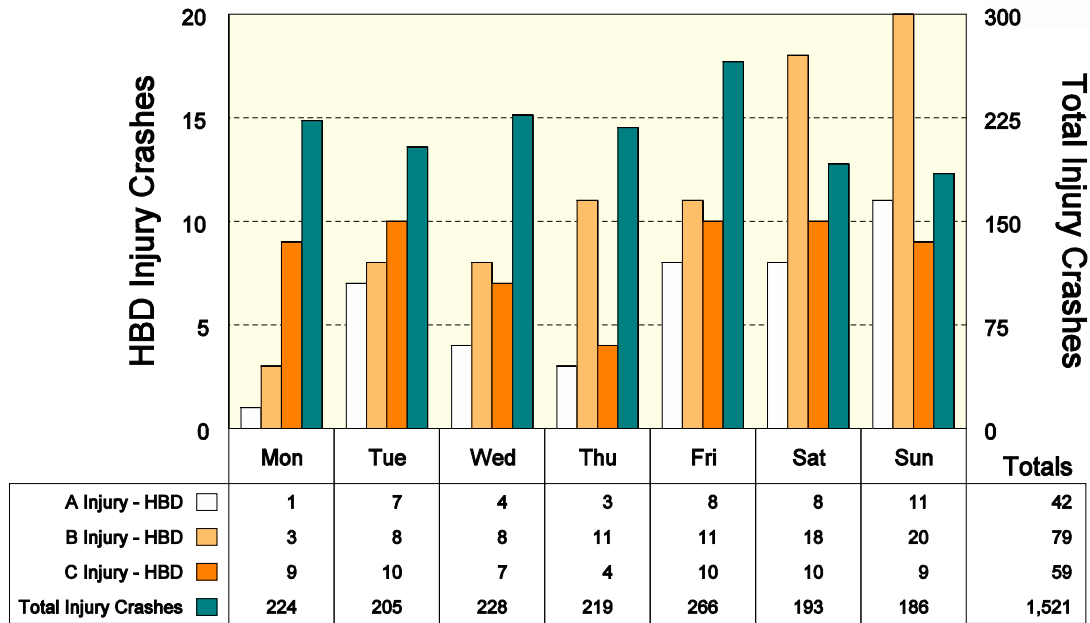
### Alcohol-related Injuries by Month



NOTE: An alcohol-related injury is any person injured in an HBD crash.

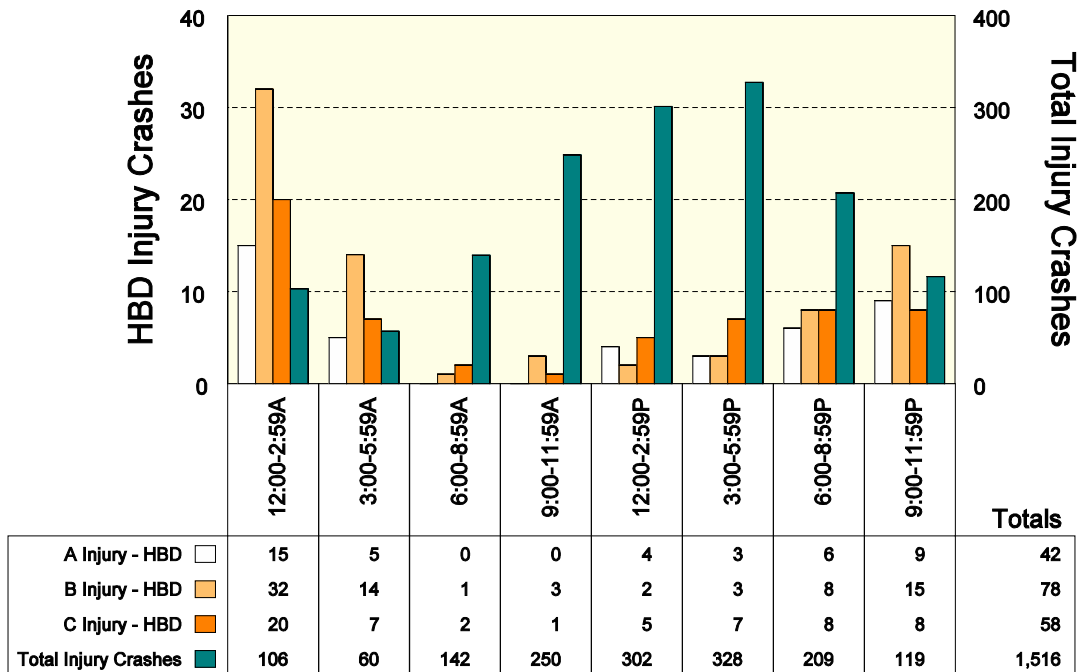


## HBD Injury Crashes by Day of Week



The peak day for all injury crashes is Friday. Saturday and Sunday have the highest proportion of HBD injury crashes to total injury crashes.

## HBD Injury Crashes by Time of Day



Total injury crash frequencies peak in the hours between 3:00 PM and 5:59 PM, while HBD injury crash frequencies peak between midnight and 2:59 AM (a particularly hazardous travel period). There were 5 injury crashes (including 2 HBD crashes) where the time of day was unknown, and those 5 injury crashes do not appear in this table.