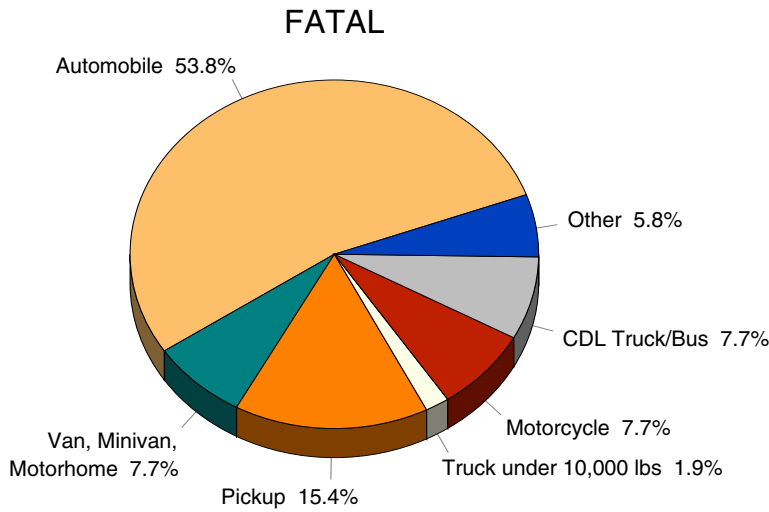
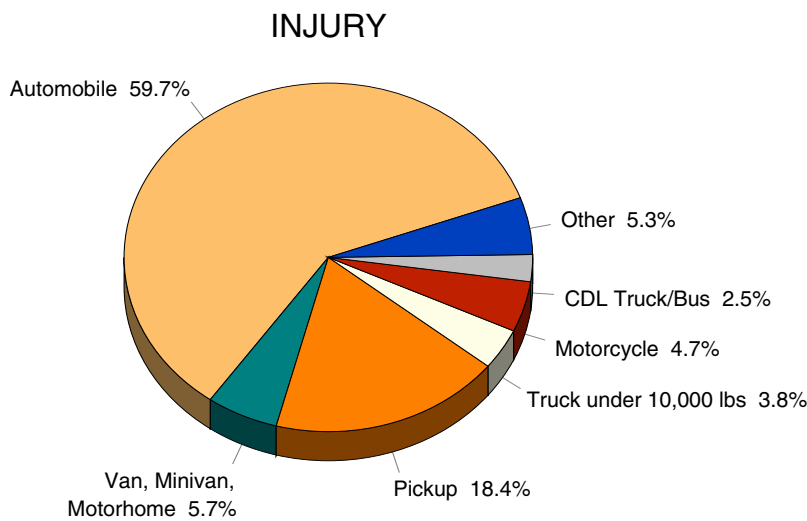




UPPER PENINSULA VEHICLE TYPES IN CRASHES BY CRASH SEVERITY



The top chart shows that 69.2 percent of vehicles involved in fatal crashes in the Upper Peninsula are automobiles or pickups. Van/motorhome, the vehicle type that includes the minivan, has a fatal crash involvement of 7.7 percent.



Special Note:
"Other" consists of moped, go-cart, snowmobile, off-road vehicle, other, and unknown.

As with fatal crashes, injury and property damage only (PDO) crashes are represented primarily by cars and pickups.

