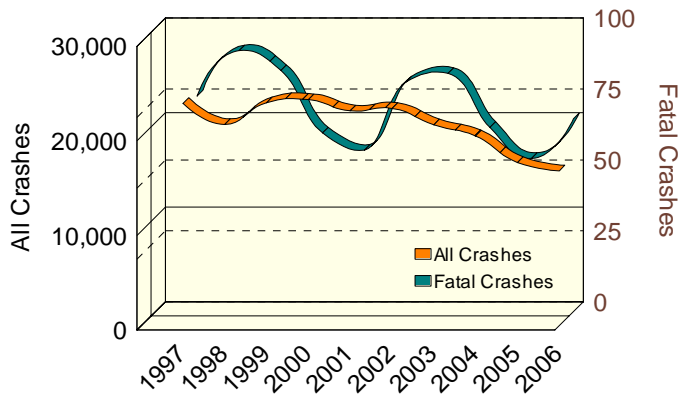




10 YEAR TRENDS (continued)

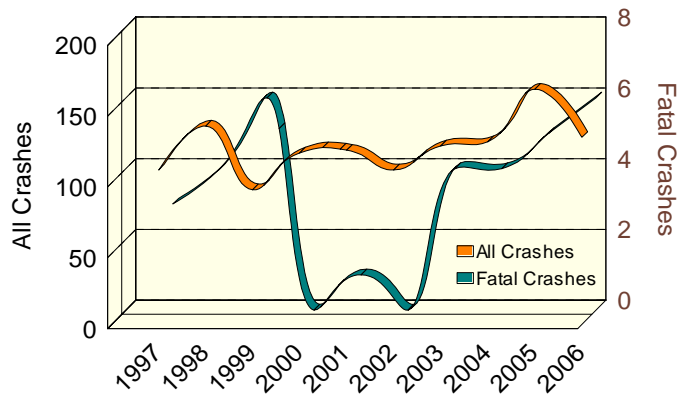
UPPER PENINSULA MOTOR VEHICLES

Number in All and Fatal Crashes



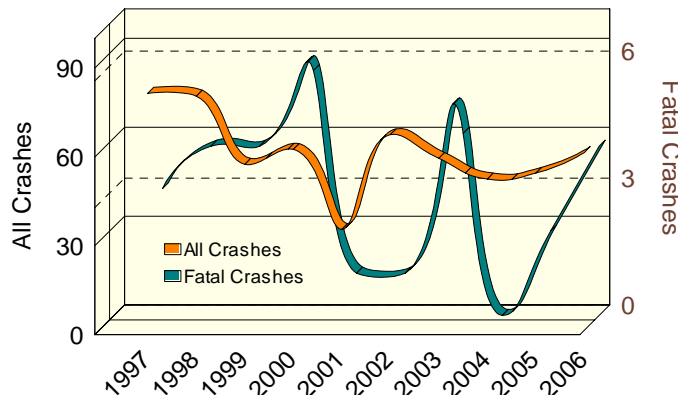
UPPER PENINSULA MOTORCYCLES

Number in All and Fatal Crashes



UPPER PENINSULA PEDESTRIANS

Number in All and Fatal Crashes





10 YEAR

UPPER PENINSULA MOTOR VEHICLES		
	All Crashes	Fatal Crashes
1997	23,538	76
1998	21,288	92
1999	23,591	85
2000	23,919	63
2001	22,739	57
2002	22,999	81
2003	21,268	84
2004	20,076	65
2005	17,275	54
2006	16,379	68

There were 68 motor vehicles involved in Upper Peninsula fatal crashes in 2006, down 10.5 percent from 1997.

UPPER PENINSULA MOTORCYCLES		
	All Crashes	Fatal Crashes
1997	109	3
1998	140	4
1999	95	6
2000	121	0
2001	123	1
2002	109	0
2003	126	4
2004	129	4
2005	166	5
2006	132	6

The number of motorcycles involved in all crashes in the Upper Peninsula has increased 21.1 percent in the ten-year period.

UPPER PENINSULA PEDESTRIANS		
	All Crashes	Fatal Crashes
1997	80	3
1998	79	4
1999	56	4
2000	61	6
2001	34	1
2002	66	1
2003	58	5
2004	51	0
2005	53	2
2006	60	4

There were 60 pedestrians involved in all crashes in the Upper Peninsula in 2006, down 25.0 percent from 1997.