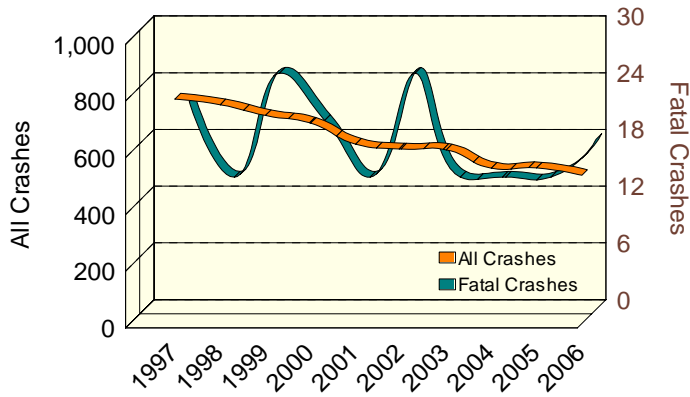




10 YEAR TRENDS (continued)

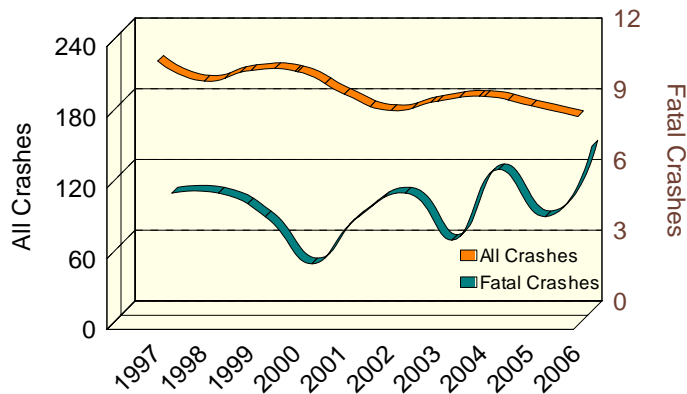
UPPER PENINSULA ALL DRINKING DRIVERS

Number in All and Fatal Crashes



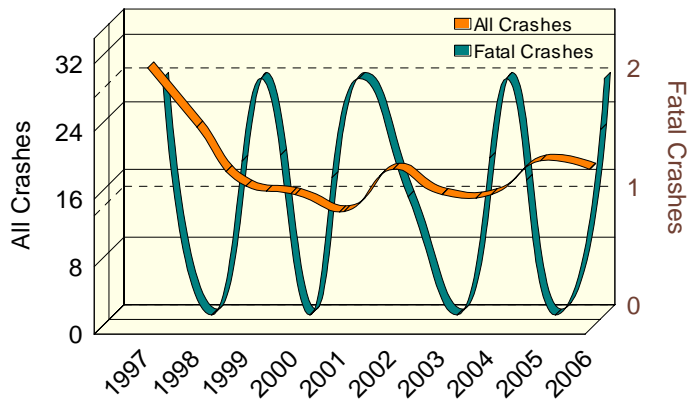
UPPER PENINSULA TEEN/YOUNG ADULT DRINKING DRIVERS

Age 16-24: Number in All and Fatal Crashes



UPPER PENINSULA ELDERLY DRINKING DRIVERS

Age 65-110: Number in All and Fatal Crashes





10 YEAR

UPPER PENINSULA DRINKING DRIVERS		
	All Crashes	Fatal Crashes
1997	792	22
1998	772	14
1999	734	25
2000	707	20
2001	633	14
2002	616	25
2003	613	14
2004	548	14
2005	549	14
2006	523	18

Drinking driver involvement in all crashes in the Upper Peninsula decreased by 34.0 percent from 1997.

UPPER PENINSULA TEEN/YOUNG ADULT DRINKING DRIVERS		
	All Crashes	Fatal Crashes
1997	224	5
1998	207	5
1999	216	4
2000	215	2
2001	196	4
2002	182	5
2003	190	3
2004	194	6
2005	186	4
2006	177	7

Following the trend for all drinking drivers, the number of teen/young adult drinking drivers (age 16-24) in all crashes in the Upper Peninsula decreased by 21.0 percent.

UPPER PENINSULA ELDERLY DRINKING DRIVERS		
	All Crashes	Fatal Crashes
1997	31	2
1998	24	0
1999	17	2
2000	16	0
2001	14	2
2002	19	1
2003	16	0
2004	16	2
2005	20	0
2006	19	2

The number of elderly drinking drivers (age 65-110) in all crashes in the Upper Peninsula has decreased over the ten-year period. Their involvement in fatal crashes has remained 2 or less since 1997.