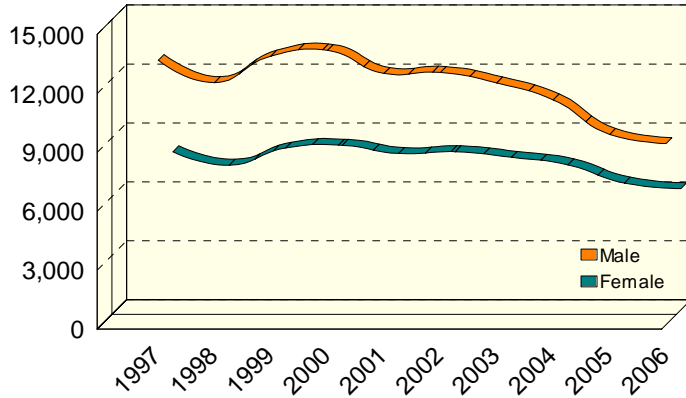




10 YEAR TRENDS (continued)

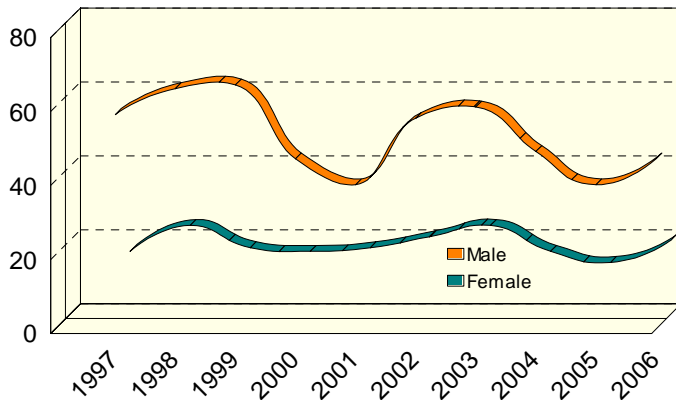
UPPER PENINSULA MALE vs. FEMALE DRIVERS

Number in All Crashes



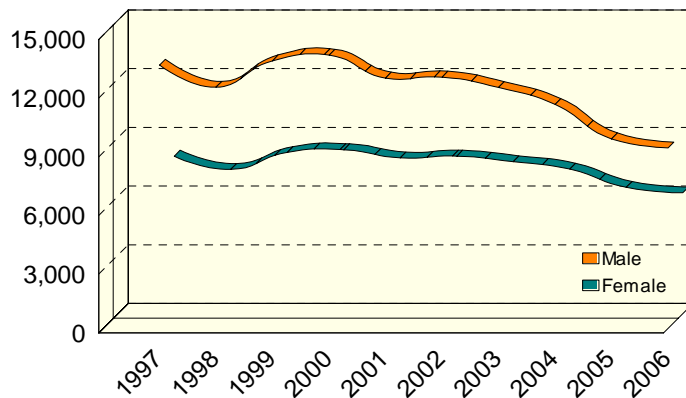
UPPER PENINSULA MALE vs. FEMALE DRIVERS

Number in Fatal Crashes



UPPER PENINSULA MALE vs. FEMALE DRINKING DRIVERS

Number in All Crashes





10 YEAR

UPPER PENINSULA DRIVERS IN ALL CRASHES		
	Male	Female
1997	13,462	8,058
1998	12,328	7,375
1999	13,678	8,250
2000	13,967	8,384
2001	12,794	7,967
2002	12,842	8,057
2003	12,311	7,772
2004	11,451	7,394
2005	9,688	6,462
2006	9,222	6,179

Male drivers accounted for 56.3 percent of all drivers in crashes during 2006, down slightly from 57.3 percent in 1997.

Note: 6.0 percent of all drivers (978) were coded as unknown gender in 2006.

UPPER PENINSULA DRIVERS IN FATAL CRASHES		
	Male	Female
1997	58	17
1998	65	24
1999	66	18
2000	46	17
2001	39	18
2002	57	21
2003	60	24
2004	48	17
2005	39	14
2006	46	20

Male drivers made up 67.6 percent of all drivers in fatal Upper Peninsula crashes in 2006, down from 76.3 percent in 1997.

Note: 2.9 percent of drivers (2) in fatal crashes were coded as unknown gender in 2006.

UPPER PENINSULA DRINKING DRIVERS IN ALL CRASHES		
	Male	Female
1997	615	162
1998	617	149
1999	567	153
2000	573	130
2001	486	140
2002	480	120
2003	474	126
2004	420	123
2005	440	109
2006	409	113

Male drivers have always accounted for the majority of drinking drivers in all crashes. The number of male drivers in all crashes in the Upper Peninsula decreased 33.5 percent in the ten-year period between 1997 and 2006.