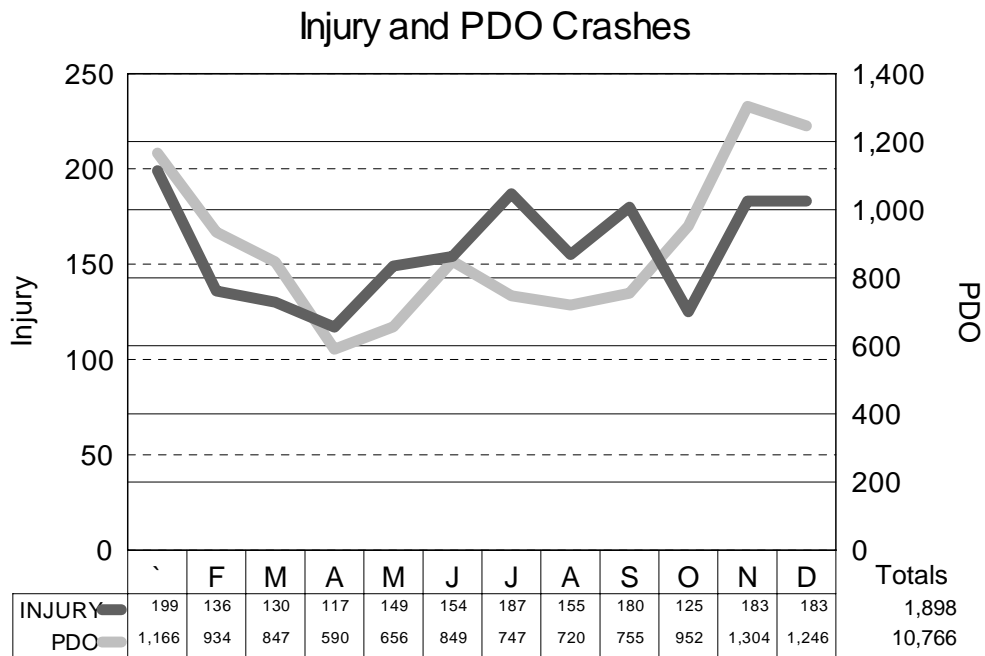
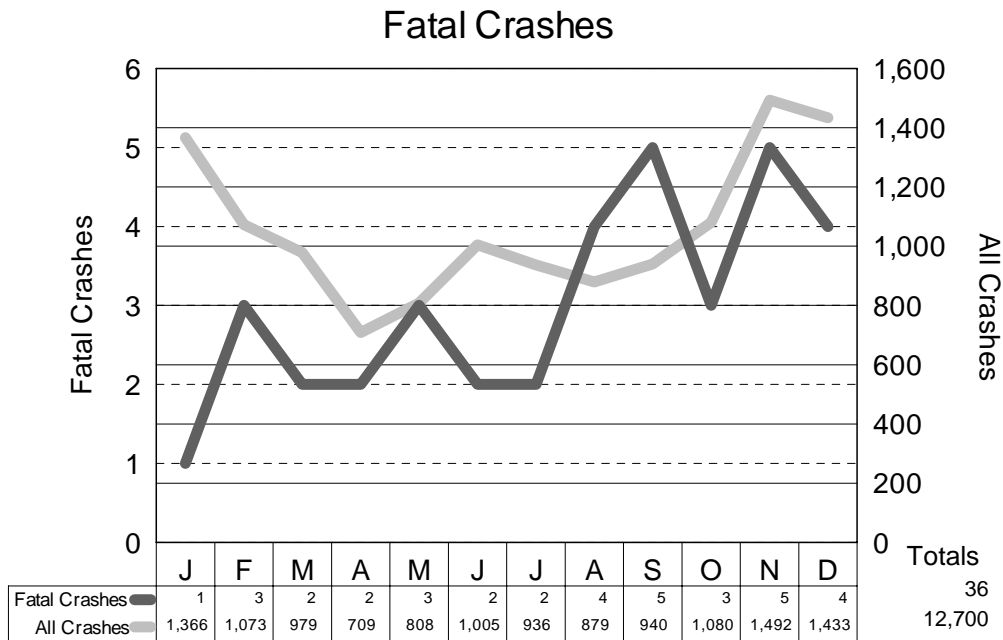




UPPER PENINSULA ALL CRASHES INJURY SEVERITY BY MONTH



The charts on this page show the months of May and July through September are peak months (18.1% or above) in terms of the percent of all crashes involving death or injury in the Upper Peninsula. That is, if a person was in a motor vehicle crash during one of these months there was a higher chance of that crash resulting in death or injury to one of the involved persons than if that crash happened during one of the other months.