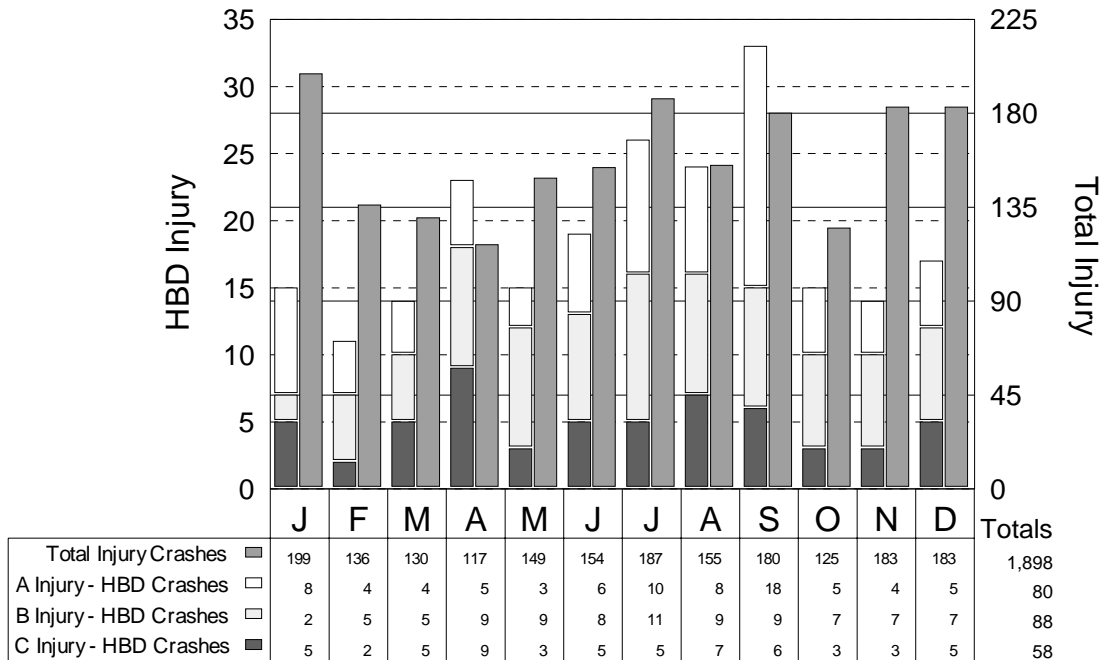




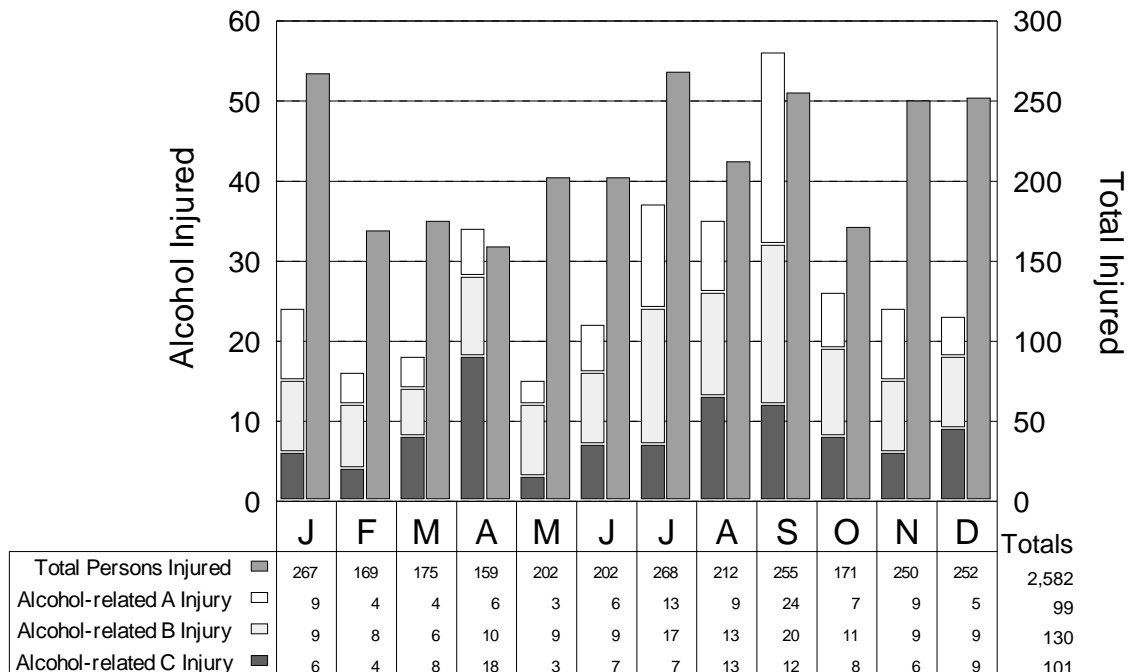
UPPER PENINSULA ALCOHOL INVOLVEMENT IN INJURY CRASHES

Alcohol involvement in injury crashes is an important indicator of the alcohol impaired driving problem. In 2005, the highest number of HBD injury crashes occurred in September with 33. The highest proportion of HBD injury crashes occurred in April with 19.7 percent of the injury crashes in that month involving alcohol.

HBD Injury Crashes by Month

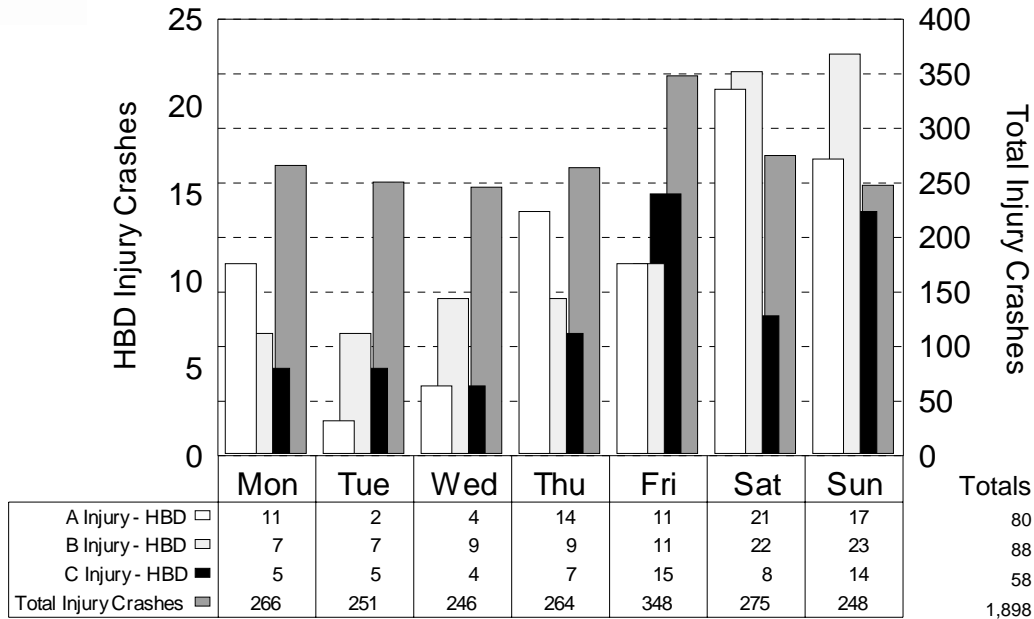


Alcohol-related Injuries by Month



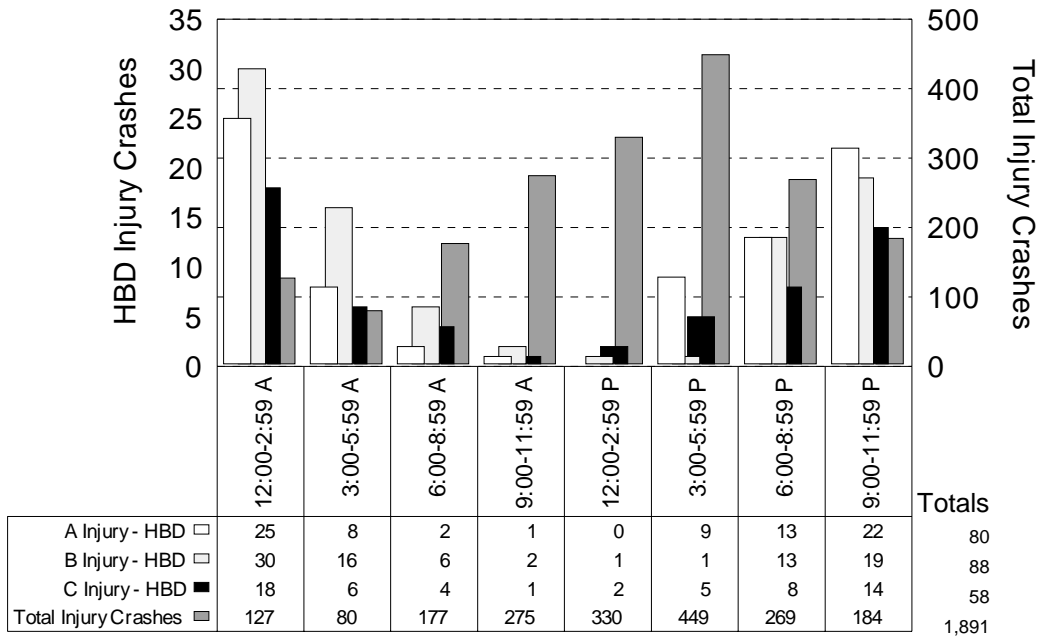


HBD Injury Crashes by Day of Week



The peak day for all injury crashes is Friday. The weekend sees a dramatic increase in the proportion of HBD injury crashes to total injury crashes.

HBD Injury Crashes by Time of Day



Total injury crash frequencies peak in the hours between 3:00 PM and 5:59 PM, while HBD injury crash frequencies peak between 12:00 AM and 2:59 AM (a particularly hazardous travel period). There were 7 unknown time of day injury crashes.