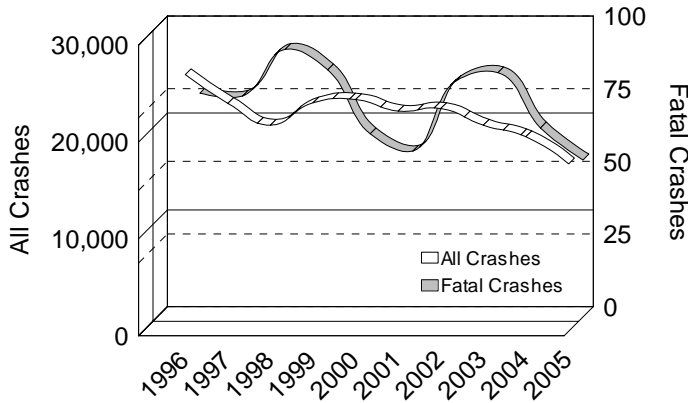


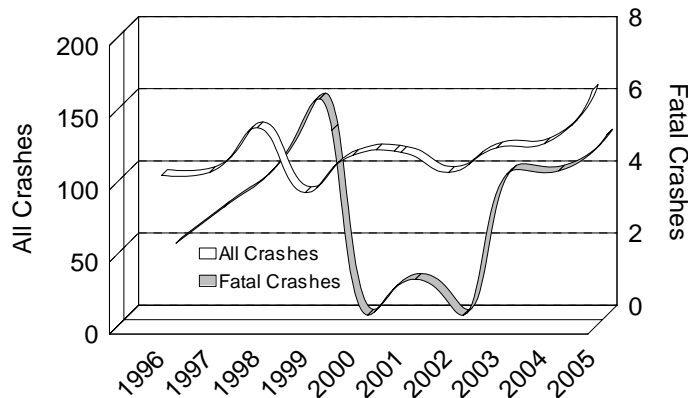


# 10 YEAR TRENDS (continued)

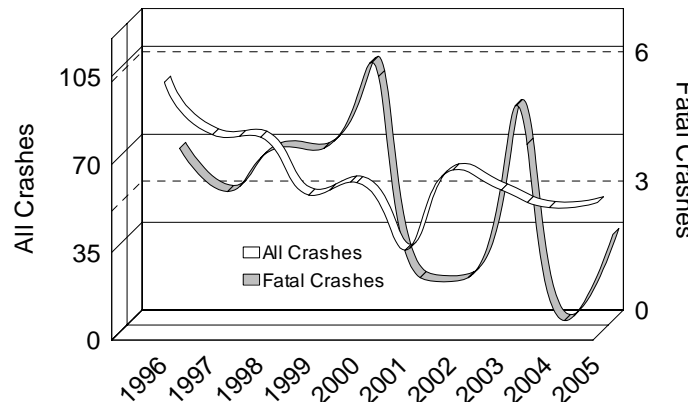
## UPPER PENINSULA MOTOR VEHICLES Number in All and Fatal Crashes



## UPPER PENINSULA MOTORCYCLES Number in All and Fatal Crashes



## UPPER PENINSULA PEDESTRIANS Number in All and Fatal Crashes





**10  
YEAR**

<b>UPPER PENINSULA MOTOR VEHICLES</b>		
	All Crashes	Fatal Crashes
1996	26,495	77
1997	23,538	76
1998	21,288	92
1999	23,591	85
2000	23,919	63
2001	22,739	57
2002	22,999	81
2003	21,268	84
2004	20,076	65
2005	17,275	54

There were 54 motor vehicles involved in Upper Peninsula fatal crashes in 2005, down 29.9 percent from 1996.

<b>UPPER PENINSULA MOTORCYCLES</b>		
	All Crashes	Fatal Crashes
1996	107	2
1997	109	3
1998	140	4
1999	95	6
2000	121	0
2001	123	1
2002	109	0
2003	126	4
2004	129	4
2005	166	5

The number of motorcycles involved in all crashes in the Upper Peninsula has increased 55.1 percent in the ten-year period.

<b>UPPER PENINSULA PEDESTRIANS</b>		
	All Crashes	Fatal Crashes
1996	101	4
1997	80	3
1998	79	4
1999	56	4
2000	61	6
2001	34	1
2002	66	1
2003	58	5
2004	51	0
2005	53	2

There were 53 pedestrians involved in all crashes in the Upper Peninsula in 2005, down 47.5 percent from 1996.