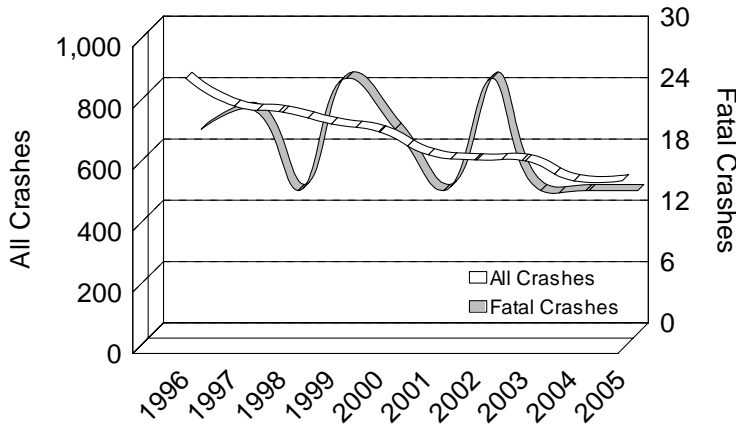


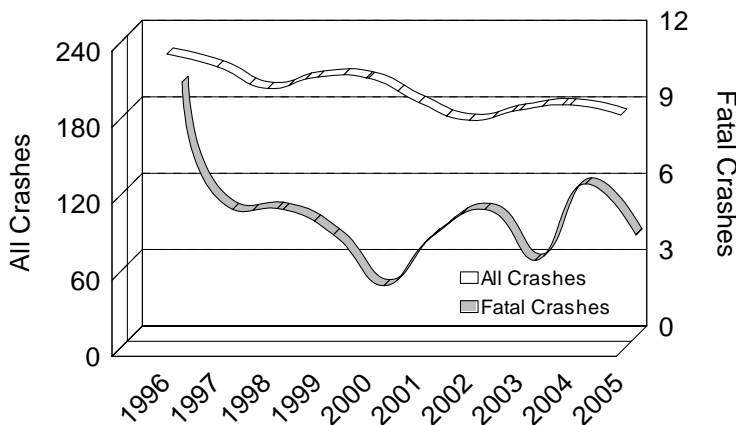


10 YEAR TRENDS (continued)

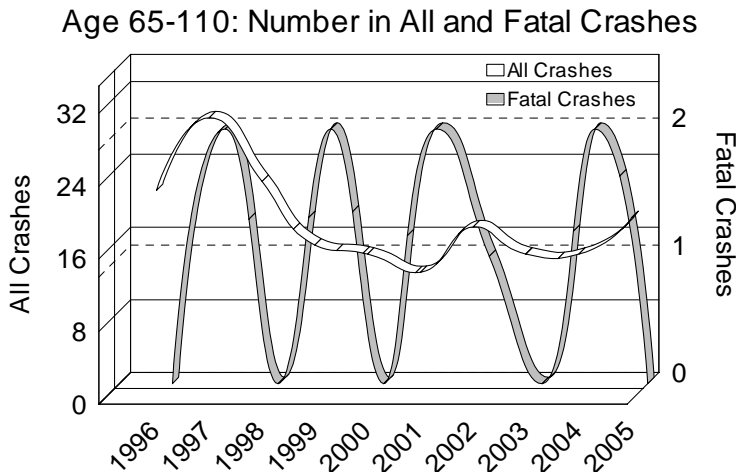
UPPER PENINSULA ALL DRINKING DRIVERS Number in All and Fatal Crashes



UPPER PENINSULA TEEN/YOUNG ADULT DRINKING DRIVERS Age 16-24: Number in All and Fatal Crashes



UPPER PENINSULA ELDERLY DRINKING DRIVERS Age 65-110: Number in All and Fatal Crashes





10 YEAR

UPPER PENINSULA DRINKING DRIVERS		
	All Crashes	Fatal Crashes
1996	883	20
1997	792	22
1998	772	14
1999	734	25
2000	707	20
2001	633	14
2002	616	25
2003	613	14
2004	548	14
2005	549	14

Drinking driver involvement in all crashes in the Upper Peninsula decreased by 37.8 percent from 1996. Their involvement in fatal crashes decreased by 30 percent over the same period.

UPPER PENINSULA TEEN/YOUNG ADULT DRINKING DRIVERS		
	All Crashes	Fatal Crashes
1996	234	10
1997	224	5
1998	207	5
1999	216	4
2000	215	2
2001	196	4
2002	182	5
2003	190	3
2004	194	6
2005	186	4

Following the trend for all drinking drivers, the number of teen/young adult drinking drivers (age 16-24) in all crashes in the Upper Peninsula decreased by 20.5 percent, and their involvement in fatal crashes decreased by 60 percent from 1996.

UPPER PENINSULA ELDERLY DRINKING DRIVERS		
	All Crashes	Fatal Crashes
1996	23	0
1997	31	2
1998	24	0
1999	17	2
2000	16	0
2001	14	2
2002	19	1
2003	16	0
2004	16	2
2005	20	0

The number of elderly drinking drivers (age 65-110) in all crashes in the Upper Peninsula has decreased over the ten-year period. Their involvement in fatal crashes has remained 2 or less since 1996.

Note: The 2005 information provided for alcohol contains data for alcohol-related crashes only. This figure DOES NOT include the combined number for alcohol- and drug-related crashes as had been reported prior to 2000.