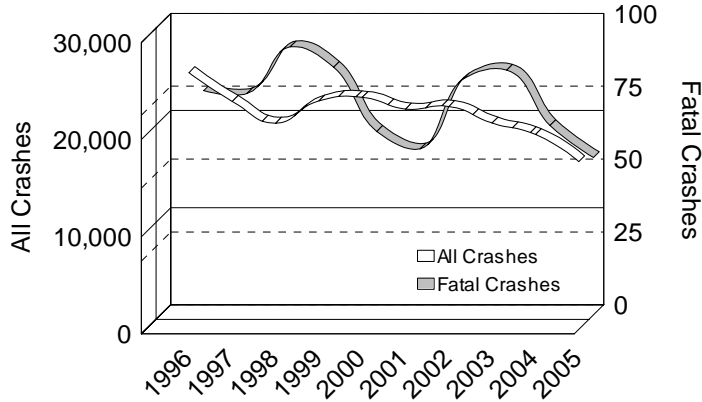




10 YEAR TRENDS (continued)

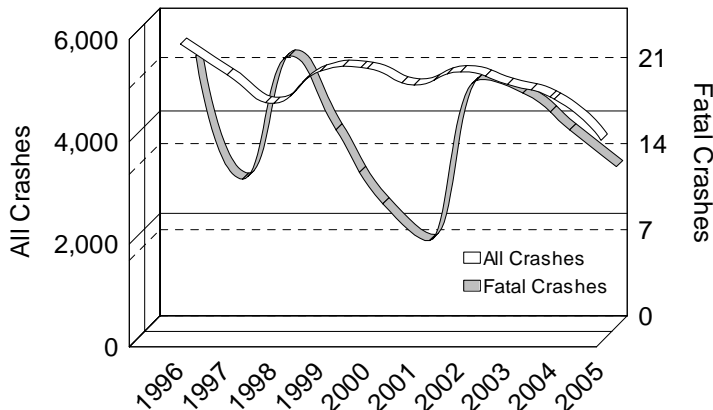
UPPER PENINSULA ALL DRIVERS

Number in All and Fatal Crashes



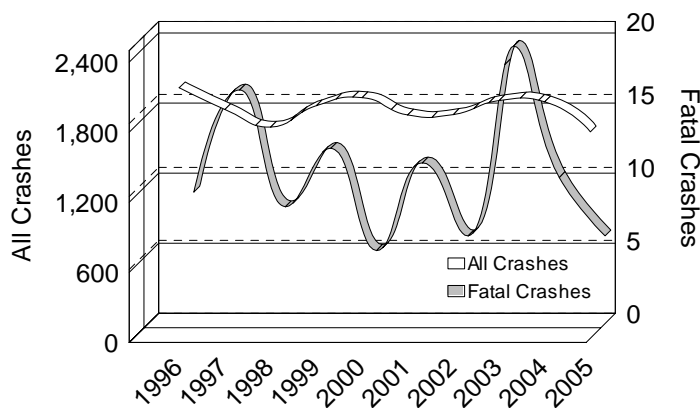
UPPER PENINSULA TEEN/YOUNG ADULT DRIVERS

Age 16-24: Number in All and Fatal Crashes



UPPER PENINSULA ELDERLY DRIVERS

Age 65-110: Number in All and Fatal Crashes





10 YEAR

UPPER PENINSULA ALL DRIVERS		
	All Crashes	Fatal Crashes
1996	26,453	77
1997	23,491	76
1998	21,248	92
1999	23,545	85
2000	23,913	63
2001	22,703	57
2002	22,967	81
2003	21,252	84
2004	20,076	65
2005	17,275	54

Driver involvement in crashes in the Upper Peninsula decreased 34.7 percent over the ten-year period.

Driver involvement in fatal crashes in the Upper Peninsula decreased 29.9 percent over the ten-year period.

UPPER PENINSULA TEEN/YOUNG ADULT DRIVERS		
	All Crashes	Fatal Crashes
1996	5,815	22
1997	5,215	12
1998	4,657	22
1999	5,287	16
2000	5,338	10
2001	5,016	7
2002	5,273	20
2003	5,025	19
2004	4,739	16
2005	3,937	13

Teen/young adult drivers (age 16-24) represent 14.3 percent of Upper Peninsula licensed drivers in 2005.

The number of teen/young adult drivers in all crashes in the Upper Peninsula has decreased by 32.3 percent since 1996. Their involvement in fatal crashes decreased 40.9 percent during the same time period.

UPPER PENINSULA ELDERLY DRIVERS		
	All Crashes	Fatal Crashes
1996	2,144	9
1997	1,958	16
1998	1,807	8
1999	1,991	12
2000	2,060	5
2001	1,910	11
2002	1,915	6
2003	2,034	19
2004	2,022	10
2005	1,766	6

Elderly drivers (age 65-110) represent 19.6 percent of Upper Peninsula licensed drivers in 2005.

The number of drivers age 65 and older in all crashes in the Upper Peninsula has decreased 17.6 percent since 1996. Their involvement in fatal crashes decreased 33.3 percent during the same time period.