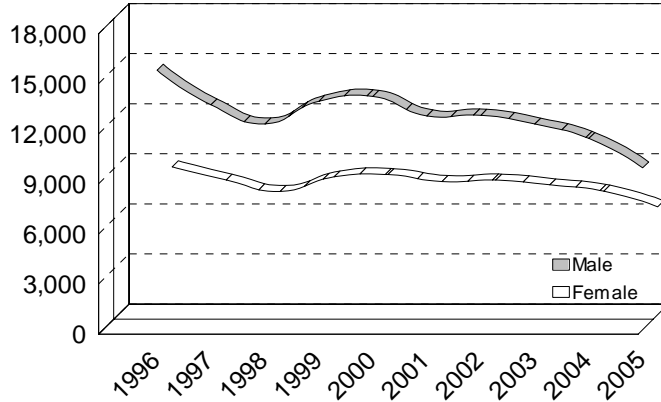




10 YEAR TRENDS (continued)

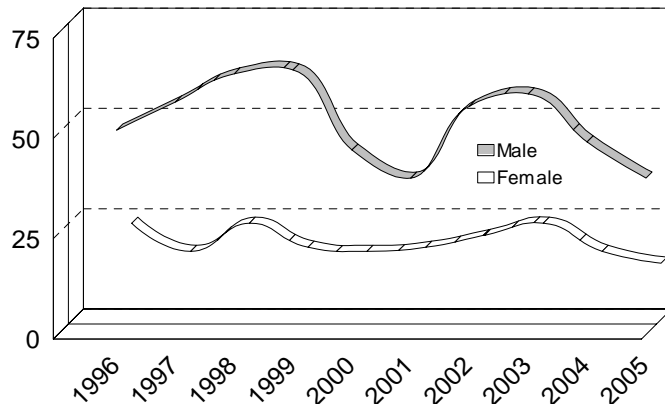
UPPER PENINSULA MALE vs. FEMALE DRIVERS

Number in All Crashes



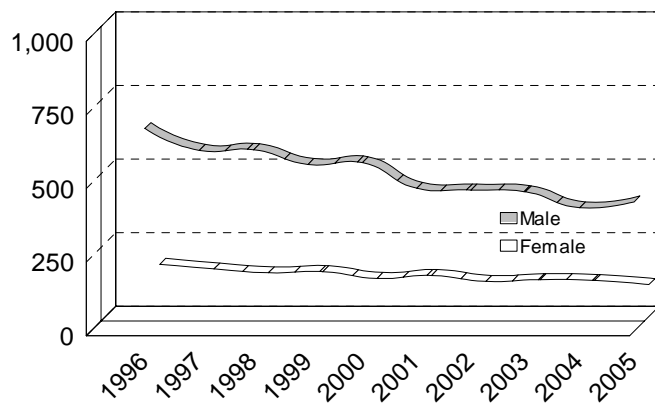
UPPER PENINSULA MALE vs. FEMALE DRIVERS

Number in Fatal Crashes



UPPER PENINSULA MALE vs. FEMALE DRINKING DRIVERS

Number in All Crashes





10 YEAR

UPPER PENINSULA DRIVERS IN ALL CRASHES		
	Male	Female
1996	15,545	8,850
1997	13,462	8,058
1998	12,328	7,375
1999	13,678	8,250
2000	13,967	8,384
2001	12,794	7,967
2002	12,842	8,057
2003	12,311	7,772
2004	11,451	7,394
2005	9,688	6,462

Male drivers accounted for 56.1 percent of all drivers in Upper Peninsula crashes in 2005. The 9,688 male driver count is down 37.7 percent from 1996.

Note: 6.5 percent of all drivers (1,125) were coded as unknown gender in 2005.

UPPER PENINSULA DRIVERS IN FATAL CRASHES		
	Male	Female
1996	51	24
1997	58	17
1998	65	24
1999	66	18
2000	46	17
2001	39	18
2002	57	21
2003	60	24
2004	48	17
2005	39	14

Male drivers made up 72.2 percent of all drivers in fatal Upper Peninsula crashes in 2005. The 39 male driver count is down 23.5 percent from 1996.

Note: 1.9 percent of drivers in fatal crashes were coded as unknown gender in 2005.

UPPER PENINSULA DRINKING DRIVERS IN ALL CRASHES		
	Male	Female
1996	689	178
1997	615	162
1998	617	149
1999	567	153
2000	573	130
2001	486	140
2002	480	120
2003	474	126
2004	420	123
2005	440	109

Male drivers have always accounted for the majority of drinking drivers in all crashes. The 440 male driver count is down 36.1 percent from 1996 in the Upper Peninsula.