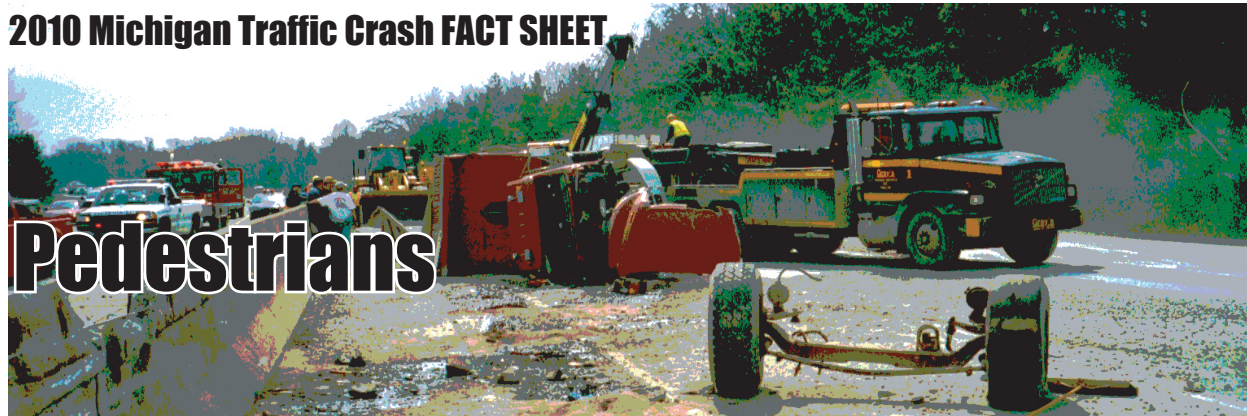
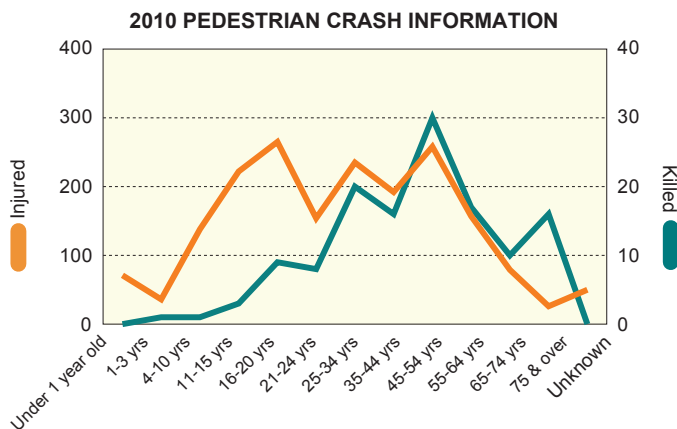


2010 Michigan Traffic Crash FACT SHEET



Pedestrians

- Since 2001, a total of 1,417 pedestrians have been killed, accounting for 12.7 percent of all traffic crash deaths during that period.
- In 2010 there were 2,333 pedestrians involved in motor vehicle crashes, with 131 pedestrians killed and 1,883 pedestrians injured.
- The male to female ratio of pedestrian deaths was 2.9:1.



- The 131 pedestrian fatality count is an increase of ten deaths (8.3%) from the 2009 figure. For each pedestrian killed, there were 14.4 pedestrians injured.
- Most pedestrians were in crashes occurring during the early evening hours (3:00 PM - 8:59 PM). However, most pedestrian fatalities occurred during hours of darkness. Thursday was the deadliest day for pedestrians in 2010 with 23 fatalities.
- Of the pedestrians killed in 2010, 27 deaths were the result of a had-been-drinking crash and 26 (96.3%) of these pedestrians had been drinking.
- Of all pedestrian actions prior to a crash, "crossing not at an intersection" is the most deadly, accounting for 36.6 percent of the pedestrian fatalities.
- Of all pedestrians killed, 3.8 percent were children 0-15, 13.0 percent were age 16-24, 27.5 percent were age 25-44, 35.9 percent were age 45-64, and 19.8 percent were 65 and older.