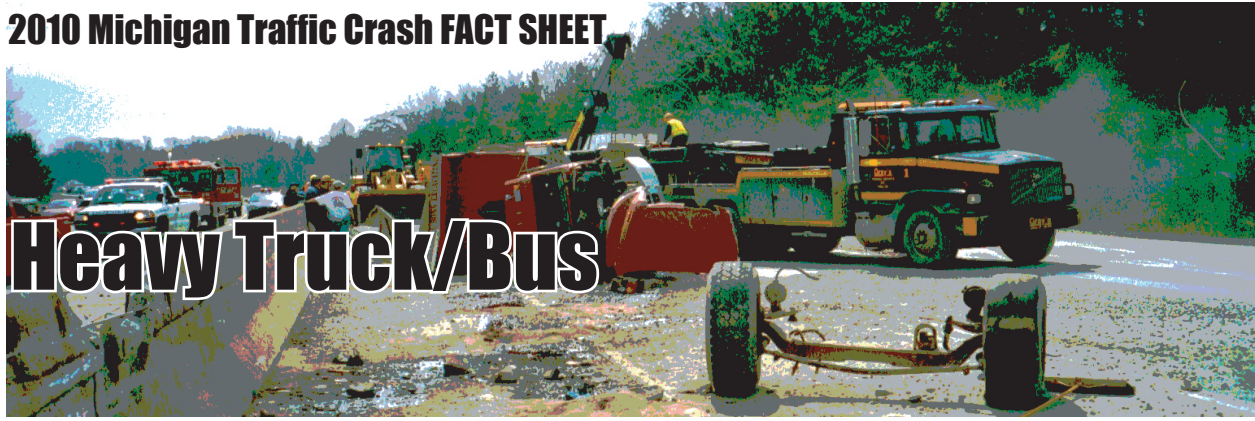


Heavy Truck/Bus



Heavy truck/bus crashes differ from other vehicle crashes in a number of ways. When compared to the overall crash picture, heavy truck/bus crashes involve:

- More drivers indicated to be making backing, lane use, and turning errors
 - More collisions with non-vehicles including: bridge/pier abutments, parked motor vehicles, jackknife, cargo loss/shift
 - Fewer single vehicle crashes but more sideswipes
 - Fewer drivers indicated to be speeding, failing to yield, reckless driving, disregarding traffic control, and unable to stop in assured clear distance
 - More on-road crashes
 - More daytime crashes, but fewer late afternoon, evening, and night time crashes
 - More weekday crashes
-
- Heavy truck/buses were involved in 3.8 percent of all traffic crashes in Michigan in 2010. This is an increase of 0.2 percent from 2009.
 - In 2010, there were 10,729 heavy truck/bus-involved crashes in which 95 people were killed and 2,535 injured. These are all increases from last year's numbers of 10,442 heavy truck/bus-involved crashes in which 76 people were killed and 2,377 injured.