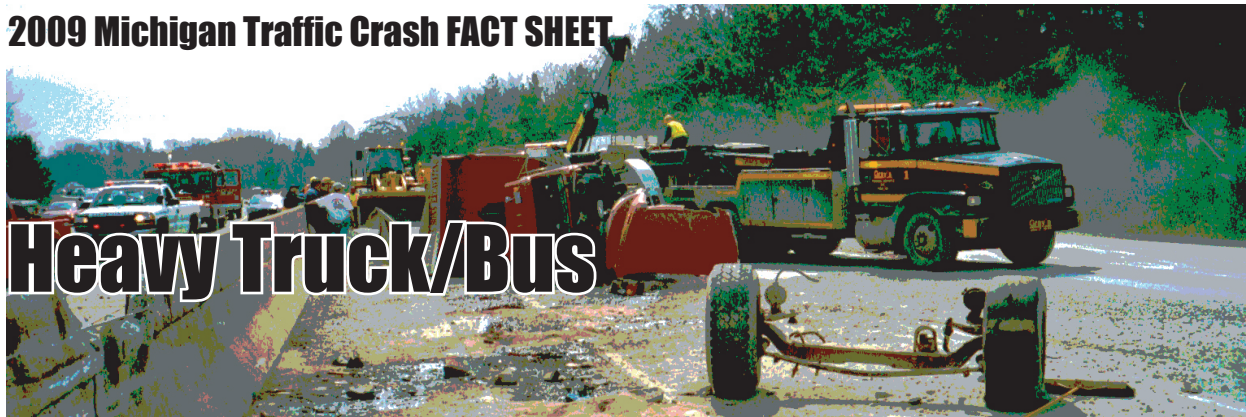


# Heavy Truck/Bus



Heavy truck/bus crashes differ from other vehicle crashes in a number of ways. When compared to the overall crash picture, heavy truck/bus crashes involve:

- More turning, backing, and changing lanes
  - More collisions with non-vehicles including: bridge/pier abutments, parked motor vehicles, jackknife, cargo loss/shift
  - Fewer single vehicle crashes but more sideswipes
  - Fewer drivers indicated to be speeding, failing to yield, reckless driving, disregarding traffic control, and unable to stop in assured clear distance, but more drivers indicated to be making backing, lane use, and turning errors
  - More on-road crashes
  - More daytime crashes, but fewer late afternoon, evening, and night time crashes
  - More weekday crashes
- 
- Heavy truck/buses were involved in 3.6 percent of all traffic crashes in Michigan in 2009.
- 
- There were 10,442 heavy truck/bus-involved crashes in which 76 people were killed and 2,377 injured.