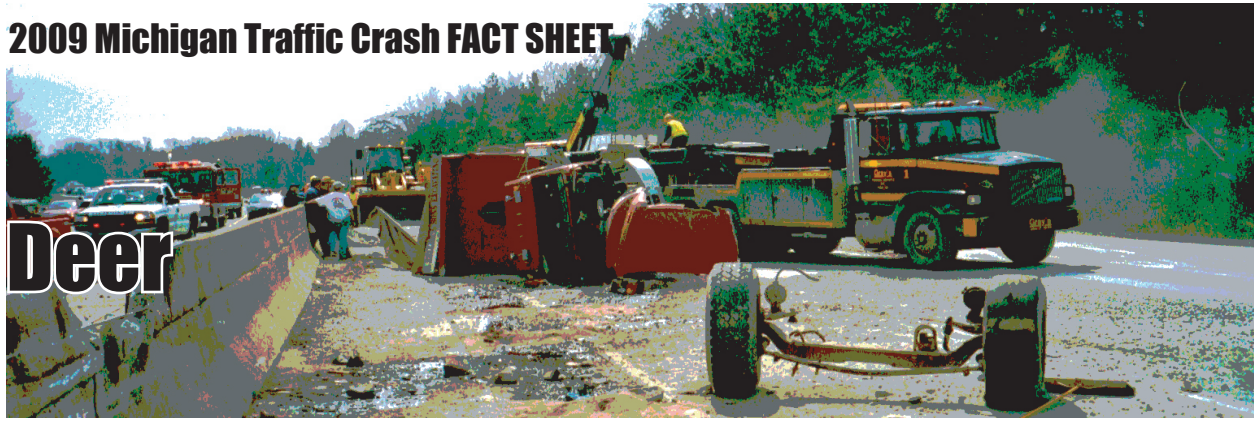


2009 Michigan Traffic Crash FACT SHEET

Deer



Motor vehicle-deer crashes occurred most often in Michigan's southern, heavily populated counties.

- Michigan had 61,486 reported motor vehicle-deer crashes during 2009. This is a 5.4 percent decrease over ten years.

- 70.2 percent of the vehicles involved in vehicle-deer crashes in 2009 were passenger cars.

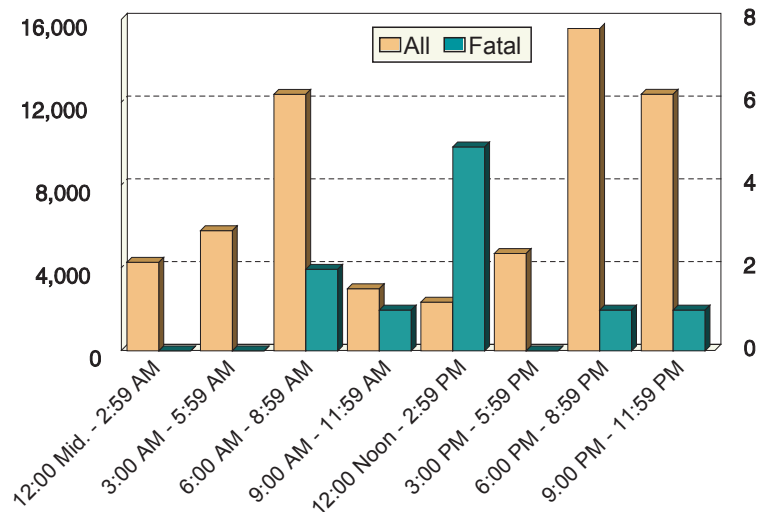
- 1,571 people were injured and 10 people were killed as a result of those collisions.

- All motor vehicle-deer involved crashes peaked during the 6:00 PM - 8:59 PM time period. Fatal deer crashes peaked during the Noon - 2:59 PM time period.

- The top ten counties, each experiencing over 1,299 vehicle-deer crashes in 2009, were:
Kent 2,164, Oakland 1,947, Jackson 1,877, Calhoun 1,659, Montcalm 1,641, Lapeer 1,455, Clinton 1,428, Genesee 1,420, Eaton 1,384, and Ottawa 1,300.

- 26,455 (43.0%) of all reported motor vehicle-deer collisions occurred during the fourth quarter of the year.

TIME AND SEVERITY OF ALL MOTOR VEHICLE-DEER CRASHES



All Motor Vehicle-Deer Crashes

