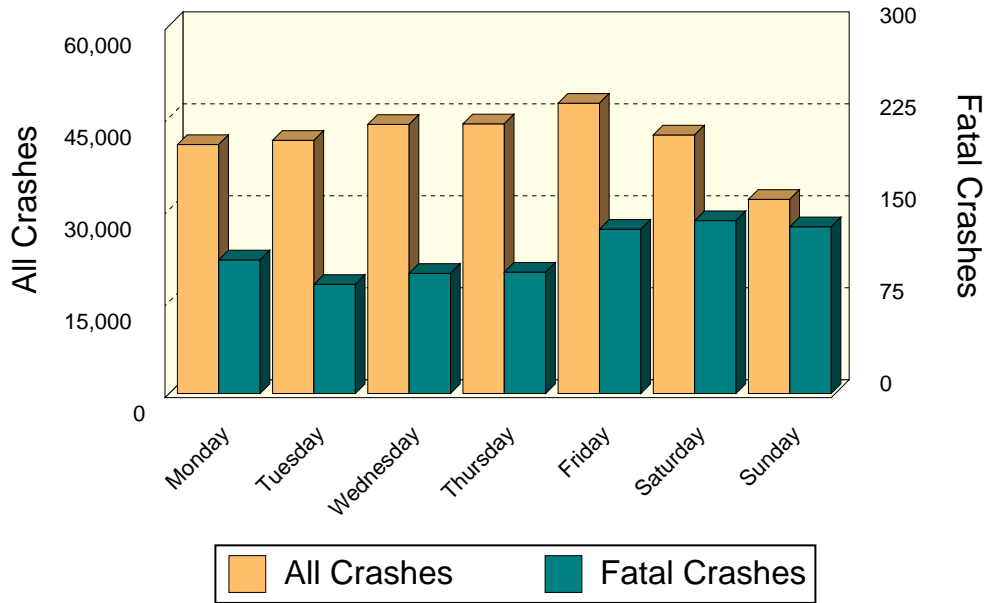


DAY OF WEEK

DAY OF WEEK	All Crashes		Fatal Crashes		Injury Crashes			PDO Crashes
	Number	% of Total	Number	% of Fatal	A	B	C	
Monday	40,609	14.0	109	13.5	648	1,687	4,906	33,259
Tuesday	41,298	14.2	89	11.0	640	1,600	5,029	33,940
Wednesday	43,893	15.1	98	12.2	734	1,725	5,234	36,102
Thursday	43,987	15.1	99	12.3	716	1,873	5,193	36,106
Friday	47,347	16.3	134	16.6	845	2,127	5,695	38,546
Saturday	42,173	14.5	141	17.5	871	2,050	4,736	34,375
Sunday	31,671	10.9	136	16.9	779	1,715	3,480	25,561
Total	290,978	100.0	806	100.0	5,233	12,777	34,273	237,889

Day of Week and Severity



Crash frequencies were higher Monday through Friday than on the weekend. Saturday (17.5%) and Sunday (16.9%) had the highest number of fatal crashes.