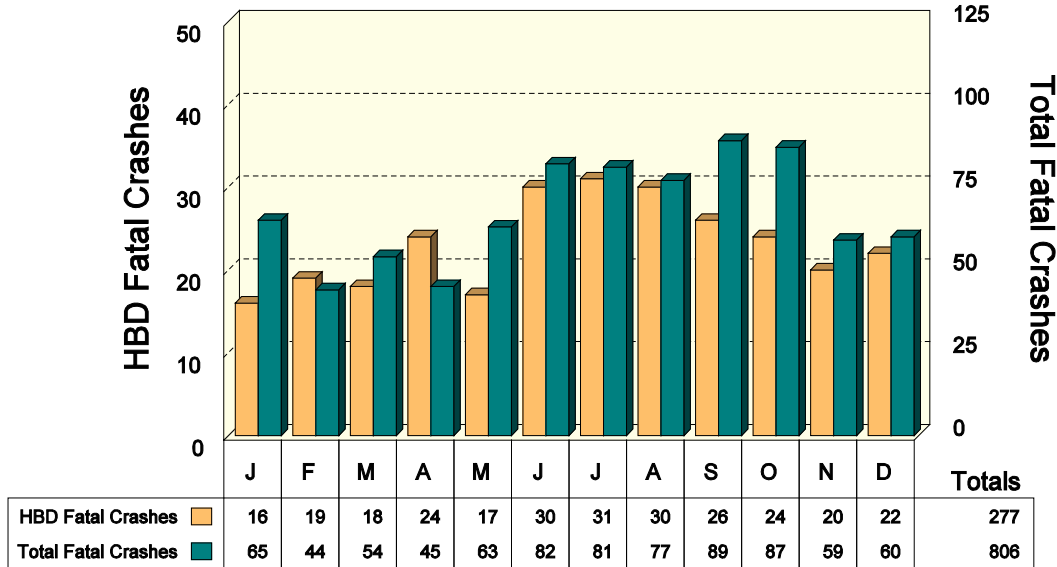


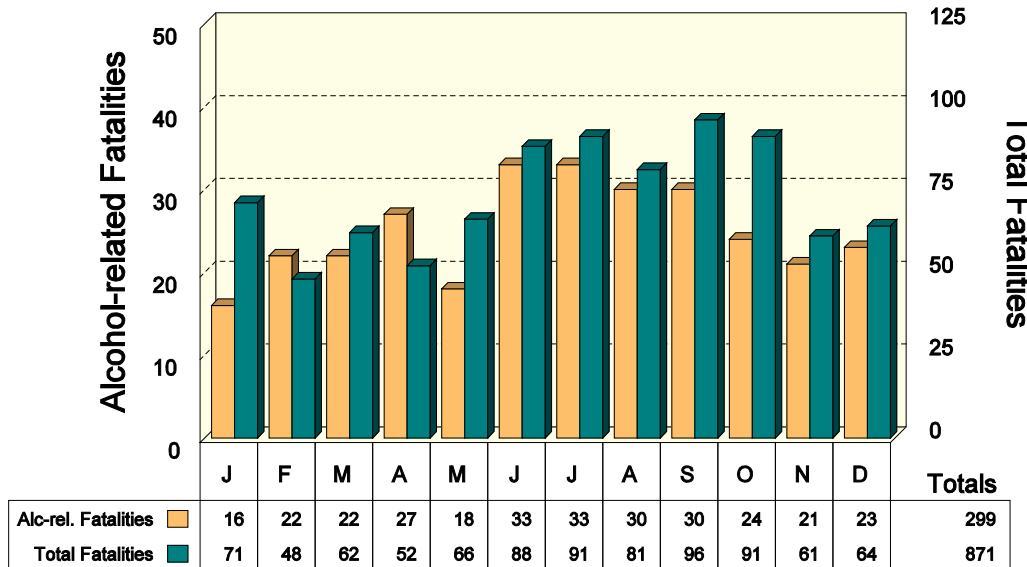
ALCOHOL INVOLVEMENT IN FATAL CRASHES

Fatal crashes (total of non-HBD and HBD fatal crashes) were lowest in number during February. HBD fatal crashes were highest in number during the summer months (June, July, August.) The number of total fatal crashes reached highest levels in September and October.

HBD Fatal Crashes by Month

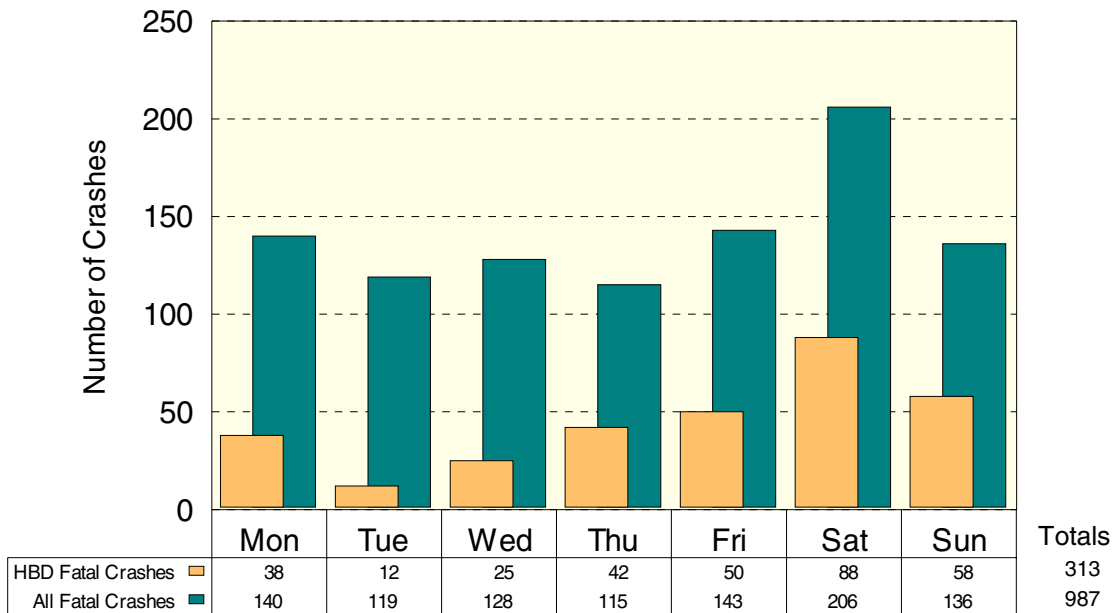


Alcohol-related Fatalities by Month



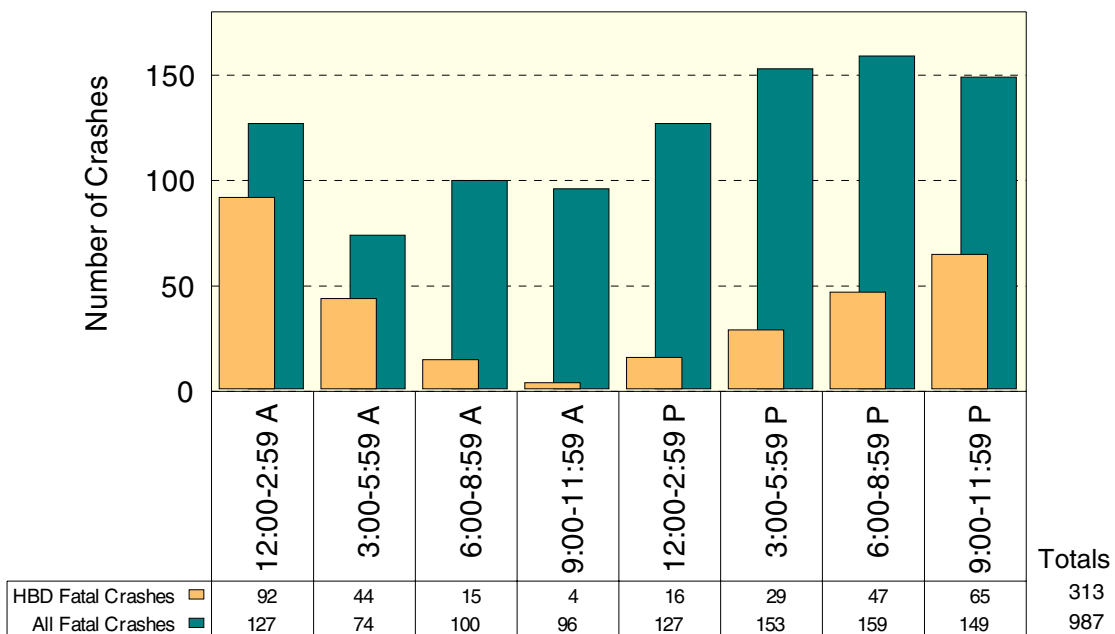
NOTE: An alcohol-related fatality is any person killed in an HBD crash.

HBD Fatal Crashes by Day of Week



Friday and Saturday had the most fatal crashes and Saturday and Sunday had the highest proportions of drinking-related fatal crashes in 2007. 42.7 percent of the fatal crashes on Saturday involved drinking, while only 10.1 percent of fatal crashes on Tuesday involved drinking.

HBD Fatal Crashes by Time of Day



Not surprisingly, the 9:00 PM to 11:59 PM, midnight to 2:59 AM, and 3:00 AM to 5:59 AM time periods had the highest rate of drinking involvement (43.6%, 72.4% and 59.5%), while the late morning hours had the lowest (4.2%).

There were 2 fatal crashes (including 1 HBD crash) where the time of day was unknown.