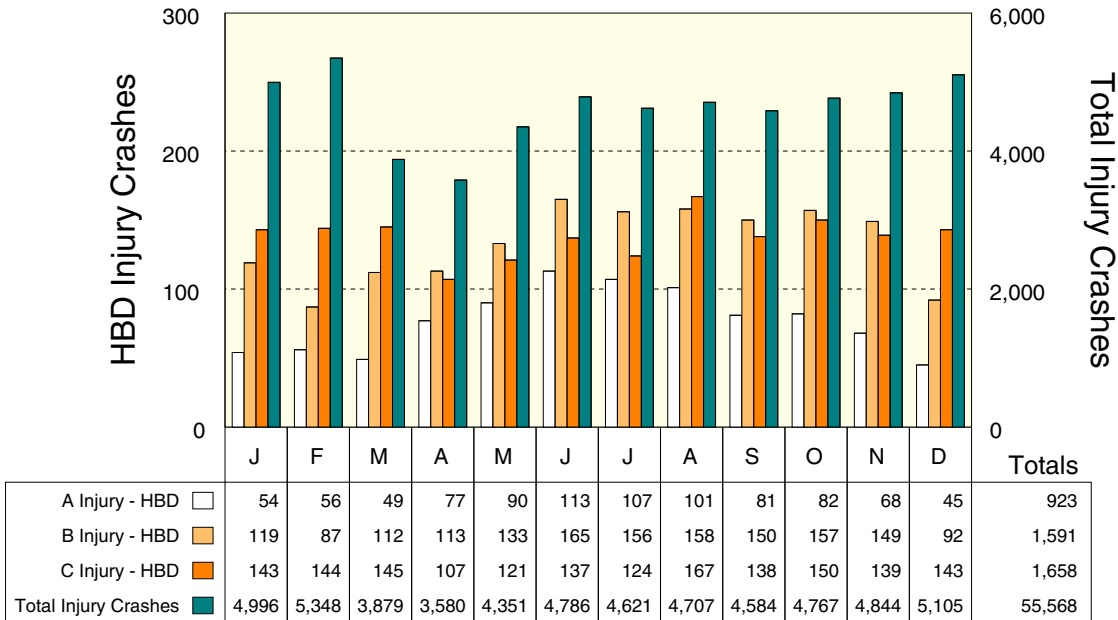


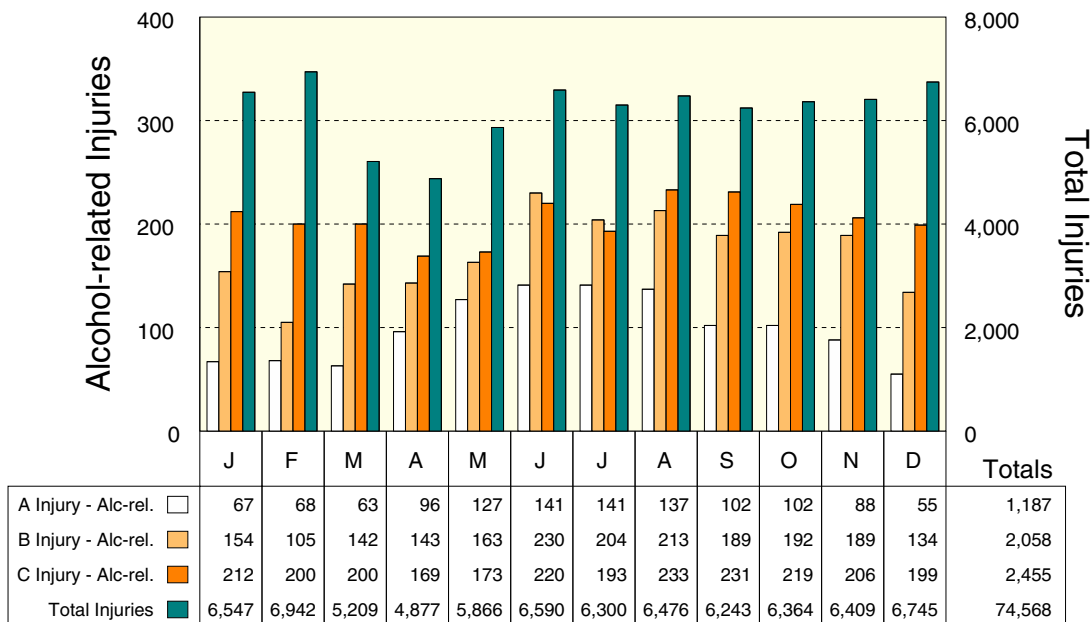
ALCOHOL INVOLVEMENT IN INJURY CRASHES

Alcohol involvement in injury crashes is an important indicator of the alcohol impaired driving problem. In 2008, the highest number of HBD injury crashes occurred in August with 426. The highest proportion of HBD injury crashes also occurred in August with 9.1 percent of the injury crashes in that month involving alcohol.

HBD Injury Crashes by Month

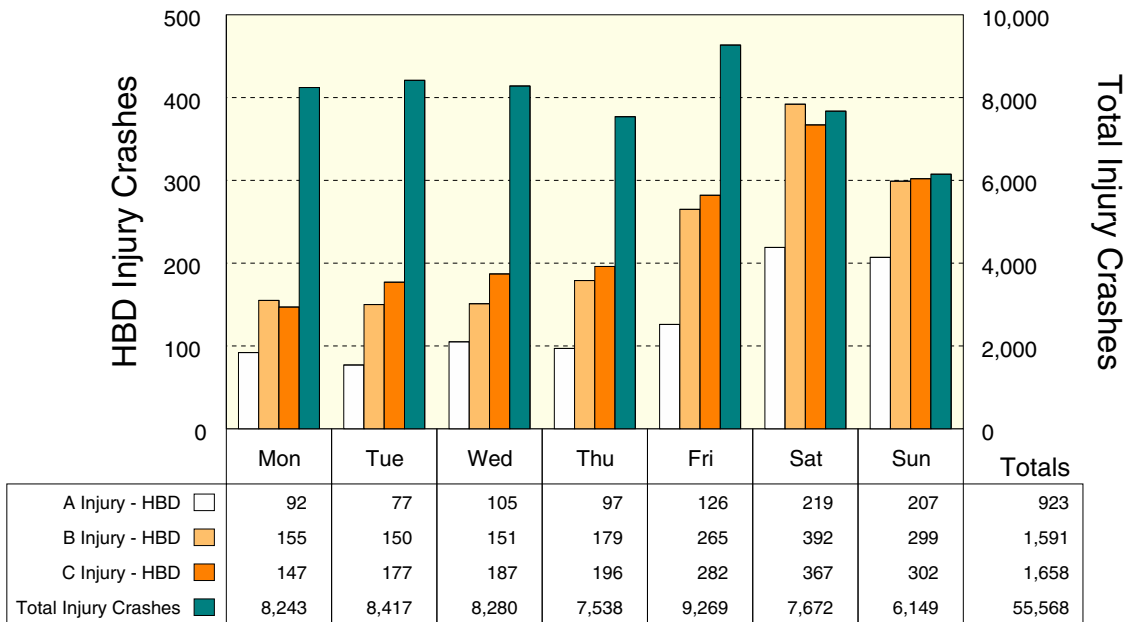


Alcohol-related Injuries by Month



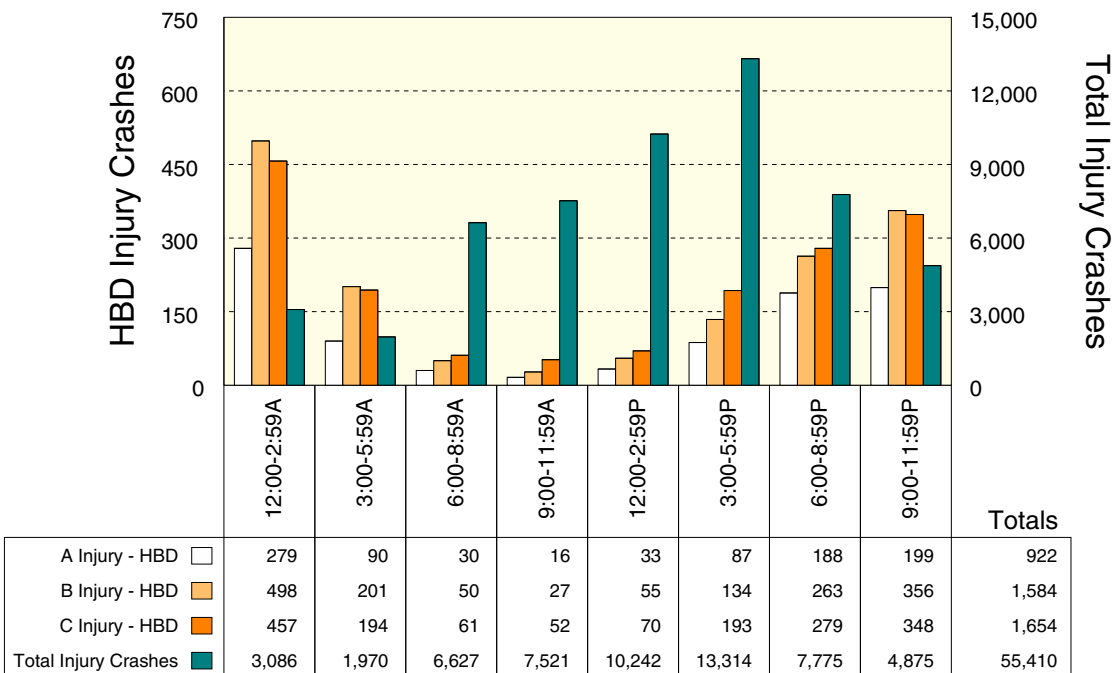
NOTE: An alcohol-related injury is any person injured in an HBD crash.

HBD Injury Crashes by Day of Week



HBD injury crashes follow the same basic trends as total crashes through the work week, but the weekend sees a dramatic increase in the proportion of HBD injury crashes to total injury crashes.

HBD Injury Crashes by Time of Day



Total injury crash frequencies peak in the hours between 3:00 PM and 5:59 PM, while HBD injury crash frequencies peak between midnight and 2:59 AM (a particularly hazardous travel period). These frequencies exclude 158 injury crashes (including 12 HBD injury crashes) where time of day was unknown.