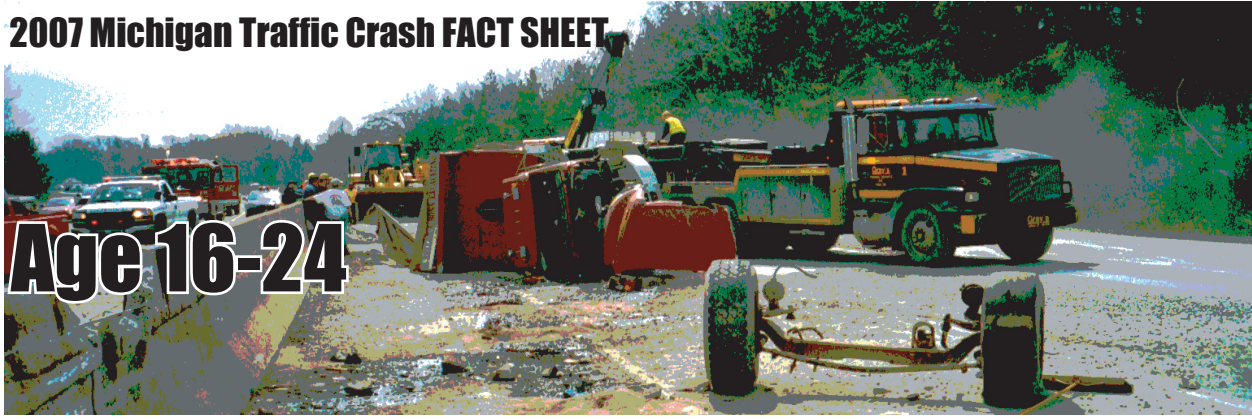


2007 Michigan Traffic Crash FACT SHEET

Age 16-24



TEENS / YOUNG ADULTS

Inexperience, risk-taking behavior, immaturity, and greater risk exposure (teens often drive at night with other teens in the vehicle) are all factors that increase crash risk for young drivers.

- 16-24** Teenagers and young adults ages 16-24 are disproportionately involved in motor vehicle crashes.
- 16-24** According to the Michigan Department of Community Health, three out of five accidental deaths for this age group are due to motor vehicle crashes.
- 16-24** 251 persons (16-24 years old) were killed in traffic crashes, including 153 (61.0%) drivers. The 16-24 age group accounted for 23.2 percent of all traffic deaths.
- 16-24** In addition 20,761 teenagers and young adults were injured in traffic crashes.
- 16-24** There were 1,023,176 licensed drivers in the 16-24 age group in 2007. 122,187 (11.9%) of these drivers were involved in crashes (355 in fatal crashes).
- 16-24** The 16-24 age group represented 14.3 percent of Michigan's active driving population, yet the drivers in this age group represented 22.7 percent of drivers in all crashes and 22.8 percent of drivers in fatal crashes.
- 16-24** Generally, younger drivers were involved in more off-road crashes and had a higher incidence of speeding, overturn, collision with a ditch, and hitting a tree. They were less likely to be alone in their car at the time of the crash.
- 16-24** Teenagers and young adults had the highest incidence of fatal crashes when their speed was too fast.
- 16-24** The weekend had a higher involvement of teen and young adult drivers in all crashes when compared to older drivers.
- 16-24** Teenagers and young adults accounted for 10.4 percent of the pedestrians killed in Michigan in 2007, and 21.4 percent of all pedestrian injuries.
- 16-24** 1 (5.9%) of the 17 bicyclist deaths in 2007 were in the 16-24 age group.