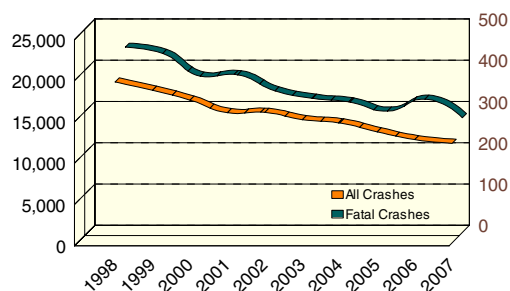


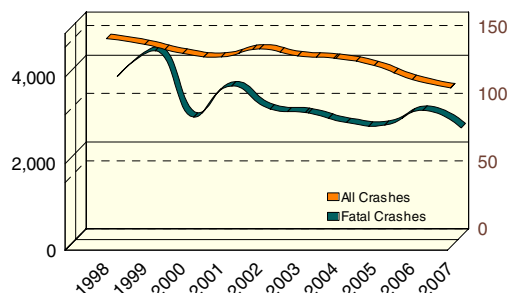
10 YEAR TRENDS (continued)

DRINKING DRIVERS		
	All Crashes	Fatal Crashes
1998	19,483	449
1999	18,469	434
2000	17,295	379
2001	15,760	382
2002	15,791	343
2003	14,922	325
2004	14,513	316
2005	13,452	294
2006	12,489	323
2007	12,059	278



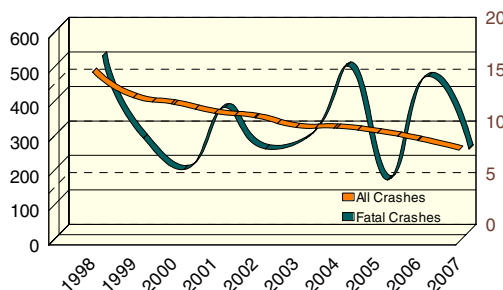
Drinking driver involvement in all crashes decreased by 38.1 percent from 1998. Drinking driver involvement in fatal crashes decreased by 38.1 percent from 1998.

TEEN/YOUNG ADULT DRINKING DRIVERS		
	All Crashes	Fatal Crashes
1998	4,812	118
1999	4,676	137
2000	4,470	88
2001	4,386	111
2002	4,571	94
2003	4,411	91
2004	4,353	84
2005	4,189	82
2006	3,867	93
2007	3,673	80



Following the trend for all drinking drivers, the number of teen/young adult drinking drivers (age 16-24) in all crashes decreased by 23.7 percent, and their involvement in fatal crashes decreased by 32.2 percent from 1998.

ELDERLY DRINKING DRIVERS		
	All Crashes	Fatal Crashes
1998	493	17
1999	418	9
2000	399	6
2001	373	12
2002	360	8
2003	332	9
2004	330	16
2005	316	5
2006	294	15
2007	266	8



The number of elderly drinking drivers (age 65-110) in all crashes continues to decrease, reaching a ten-year low of 266 in 2007.