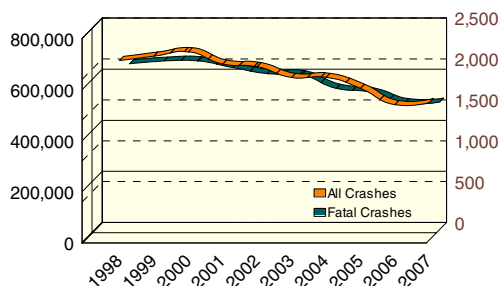


# 10 YEAR

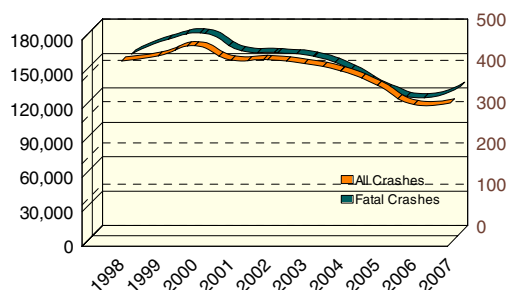
ALL DRIVERS		
	All Crashes	Fatal Crashes
1998	701,056	2,029
1999	718,639	2,061
2000	735,664	2,062
2001	687,836	1,981
2002	677,527	1,907
2003	635,096	1,891
2004	635,913	1,728
2005	592,671	1,682
2006	528,763	1,551
2007	537,228	1,558



The number of drivers involved in all crashes decreased 23.4 percent over the ten-year period.

The number of drivers involved in fatal crashes decreased 23.2 percent over the ten-year period.

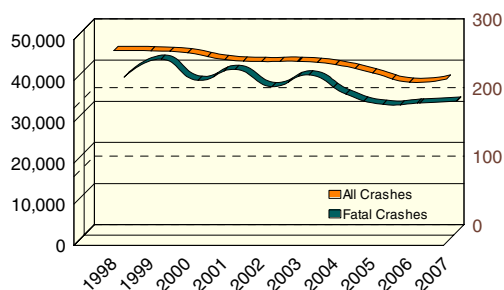
TEEN/YOUNG ADULT DRIVERS		
	All Crashes	Fatal Crashes
1998	158,887	433
1999	163,239	469
2000	172,059	483
2001	159,597	441
2002	160,003	436
2003	156,496	427
2004	150,220	396
2005	137,613	349
2006	120,760	327
2007	122,187	355



Teen/young adult drivers (age 16-24) represent 14.3 percent of the licensed drivers in 2007.

The number of teen/young adult drivers in all crashes has decreased by 23.1 percent since 1998. Their involvement in fatal crashes decreased 18.0 percent during the same time period.

ELDERLY DRIVERS		
	All Crashes	Fatal Crashes
1998	46,582	226
1999	46,519	252
2000	46,023	221
2001	44,393	237
2002	43,923	212
2003	43,967	229
2004	43,146	201
2005	41,140	186
2006	38,899	188
2007	39,656	191



Elderly drivers (age 65-110) represent 15.5 percent of the licensed drivers in 2007.

The number of drivers age 65 and older in all crashes has decreased 14.9 percent since 1998. Their involvement in fatal crashes decreased 15.5 percent during the same time period.