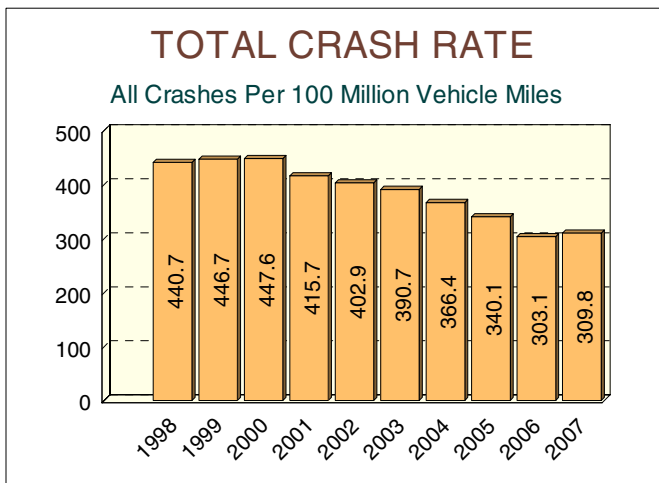
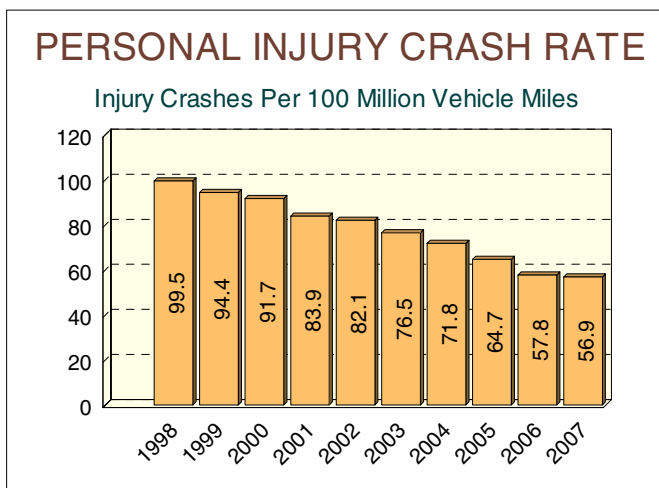


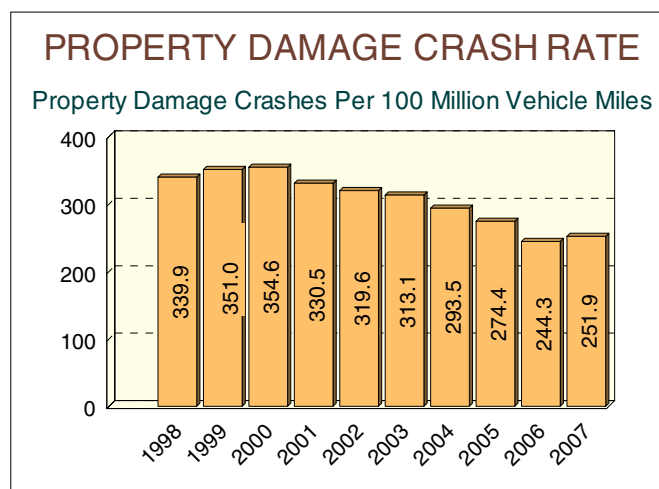
# 10 YEAR



The ten-year total crash rate peaked in 2000 at 447.6 then decreased by 30.8 percent to 309.8 in 2007.



The personal injury crash rate has been steadily decreasing since 1998. The 56.9 personal injury crash rate in 2007 is a 42.8 percent decrease from 1998.



The 251.9 property damage crash rate in 2007 is a 25.9 percent decrease from 1998.