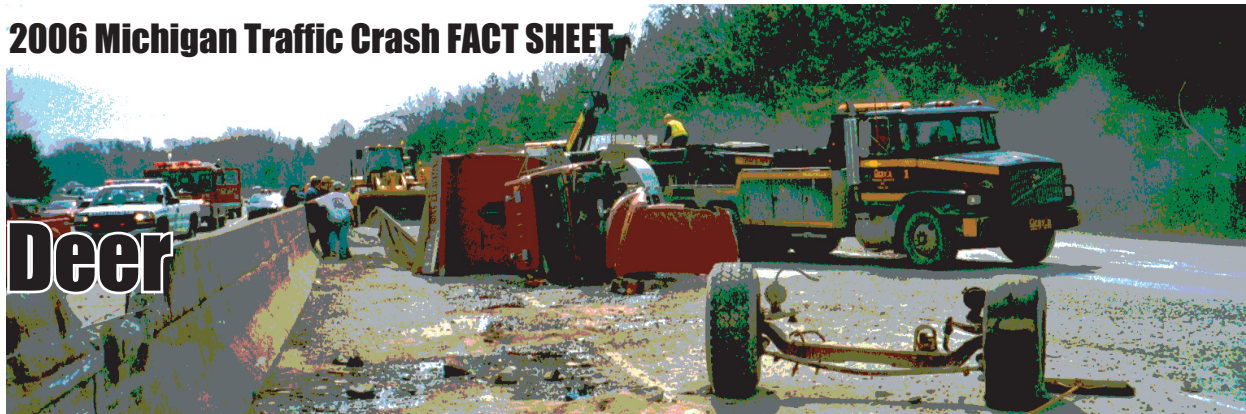


# 2006 Michigan Traffic Crash FACT SHEET

## Deer



**Contrary to common belief, motor vehicle-deer crashes are happening most often in Michigan's southern, heavily populated counties.**



Michigan had 60,875 reported motor vehicle-deer crashes during 2006. This is a 7.0 percent decrease over ten years.



65.7 percent of the vehicles involved in vehicle-deer crashes in 2006 were passenger cars.



1,676 people were injured and 12 people were killed as a result of those collisions.



All motor vehicle-deer involved crashes peaked during the 6:00 PM - 8:59 PM time period. Fatal deer crashes occurred during the 6:00 PM - 2:59 AM and 6:00 AM - 8:59 AM time periods.

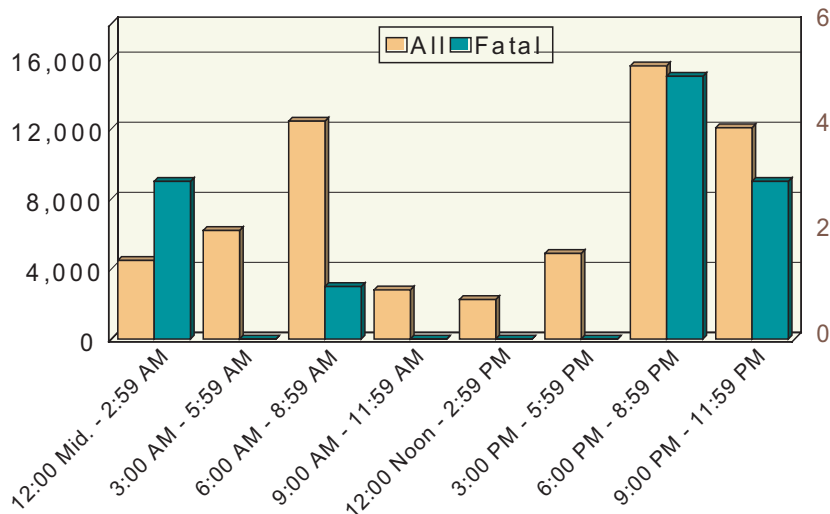


The top ten counties, each experiencing over 1,250 vehicle-deer crashes in 2006, were: Kent 2,208, Jackson 2,017, Oakland 1,866, Calhoun 1,817, Montcalm 1,576, Ingham 1,530, Eaton 1,420, Lapeer 1,373, Kalamazoo 1,354, Clinton 1,265.



26,880 (44.2%) of all reported motor vehicle-deer collisions occurred during the fourth quarter of the year.

**TIME AND SEVERITY OF ALL MOTOR VEHICLE-DEER CRASHES**



**All Motor Vehicle-Deer Crashes**

