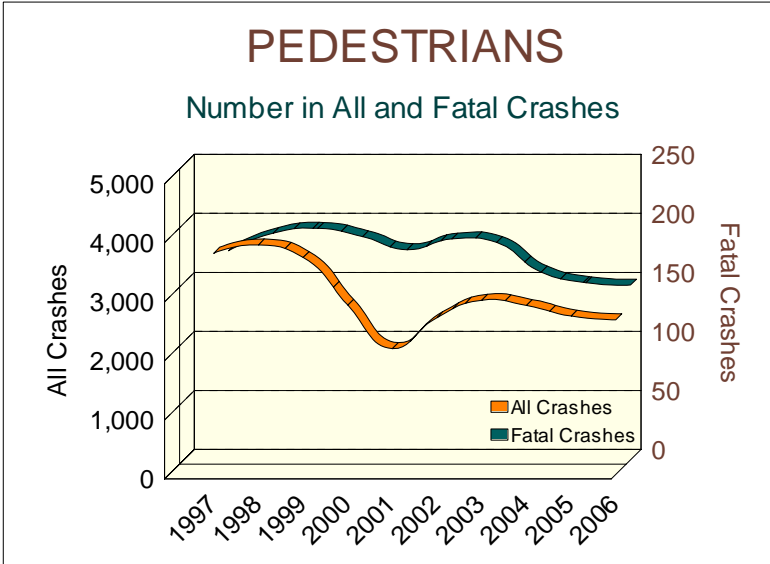
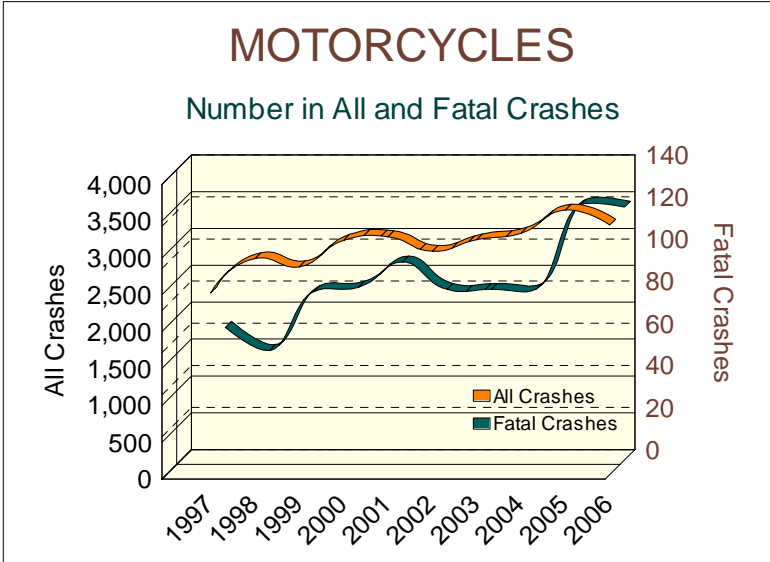
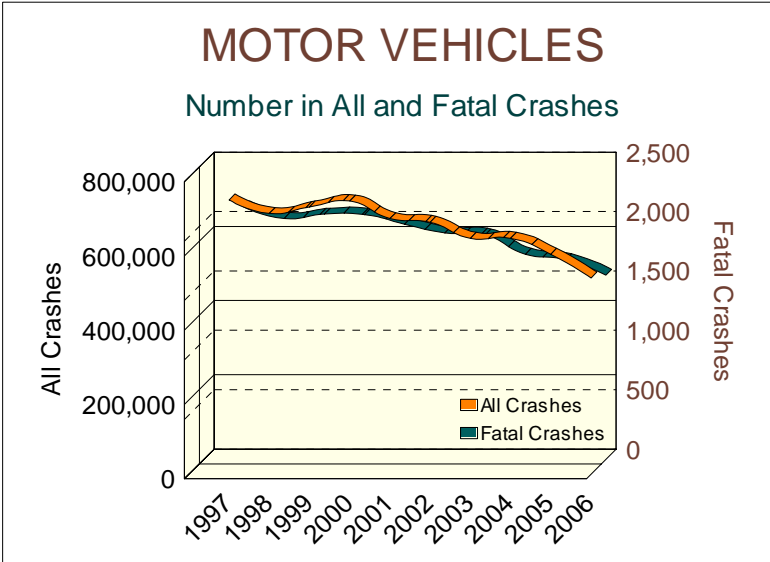


10 YEAR TRENDS (continued)



10 YEAR

MOTOR VEHICLES		
	All Crashes	Fatal Crashes
1997	739,538	2,126
1998	702,680	2,029
1999	720,393	2,066
2000	736,219	2,062
2001	689,122	1,981
2002	678,990	1,908
2003	635,767	1,892
2004	635,913	1,728
2005	592,671	1,682
2006	528,763	1,551

There were 1,551 motor vehicles involved in fatal crashes in 2006, down 27.0 percent from 1997.

MOTORCYCLES		
	All Crashes	Fatal Crashes
1997	2,465	63
1998	2,931	52
1999	2,820	80
2000	3,180	82
2001	3,228	94
2002	3,030	81
2003	3,187	81
2004	3,276	81
2005	3,589	121
2006	3,386	120

The number of motorcycles involved in fatal crashes has increased 90.5 percent in the ten-year period.

PEDESTRIANS		
	All Crashes	Fatal Crashes
1997	3,749	177
1998	3,891	192
1999	3,677	196
2000	2,868	189
2001	2,135	178
2002	2,660	187
2003	2,953	184
2004	2,864	159
2005	2,683	150
2006	2,622	148

There were 148 pedestrians involved in fatal crashes in 2006, down 16.4 percent from 1997.