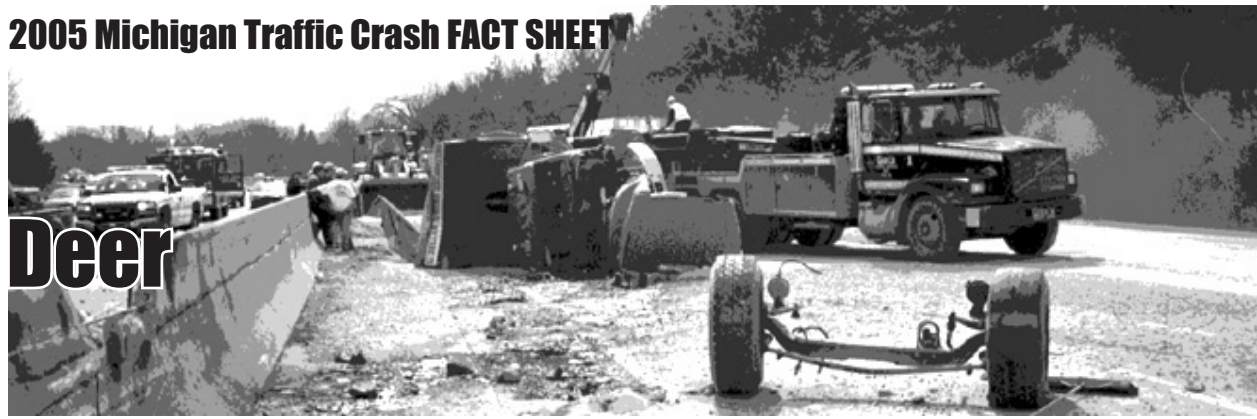


2005 Michigan Traffic Crash FACT SHEET

Deer



Contrary to common belief, motor vehicle-deer crashes are happening most often in Michigan's southern, heavily populated counties.



Michigan had 58,741 reported motor vehicle-deer crashes during 2005. This is a 13.9 percent decrease over ten years.



64.9 percent of the vehicles involved in vehicle-deer crashes in 2005 were passenger cars.



1,700 people were injured and 9 people were killed as a result of those collisions.



All motor vehicle-deer involved crashes peaked during the 6:00 PM - 8:59 PM time period. Fatal deer crashes occurred during the 3:00 PM - 5:59 AM time period.

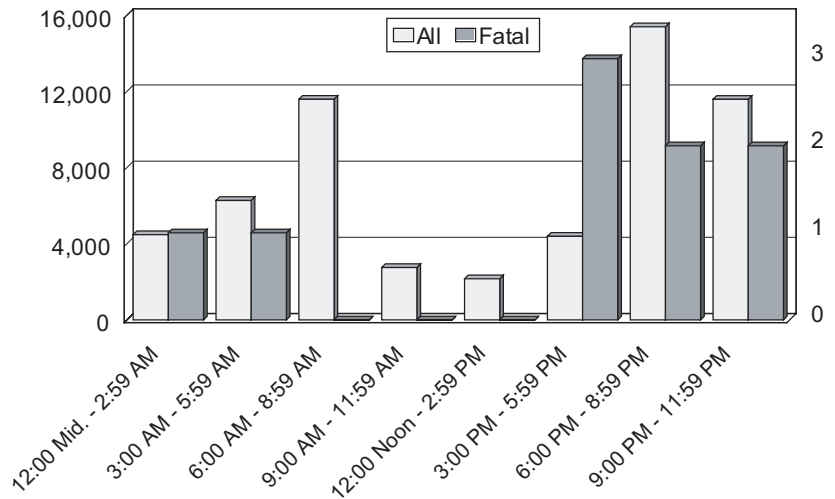


The top ten counties, each experiencing over 1,200 vehicle-deer crashes in 2005, were:
 Kent 2,169, Jackson 2,111, Calhoun 2,018, Oakland 1,704, Montcalm 1,576, Eaton 1,450, Ingham 1,439, Kalamazoo 1,303, Lapeer 1,238, Clinton 1,229.



25,311 (43.1%) of all reported motor vehicle-deer collisions occurred during the fourth quarter of the year.

TIME AND SEVERITY OF ALL MOTOR VEHICLE-DEER CRASHES



All Motor Vehicle-Deer Crashes

