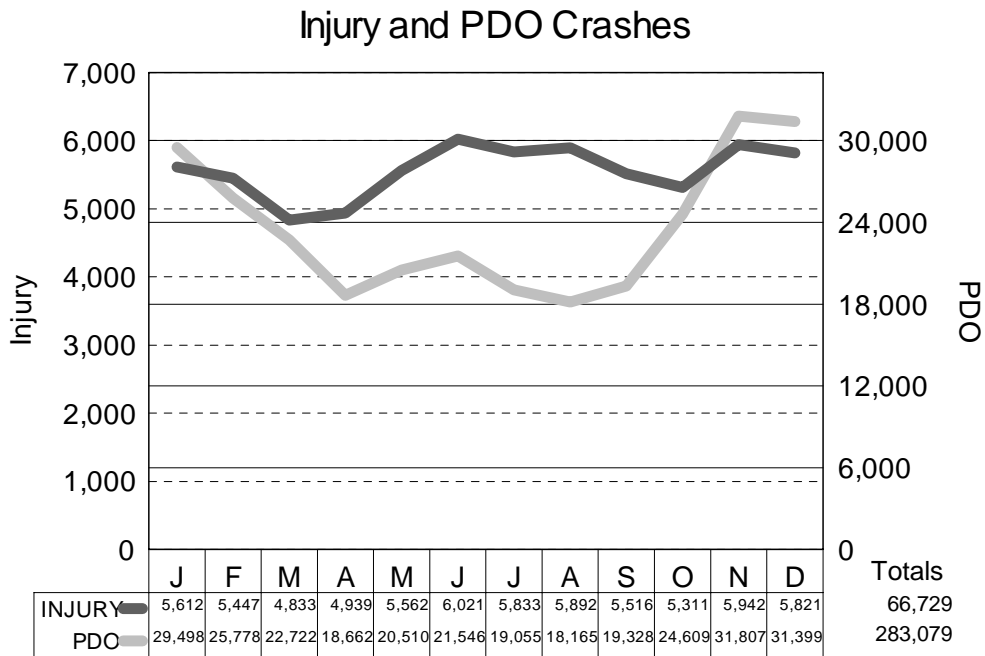
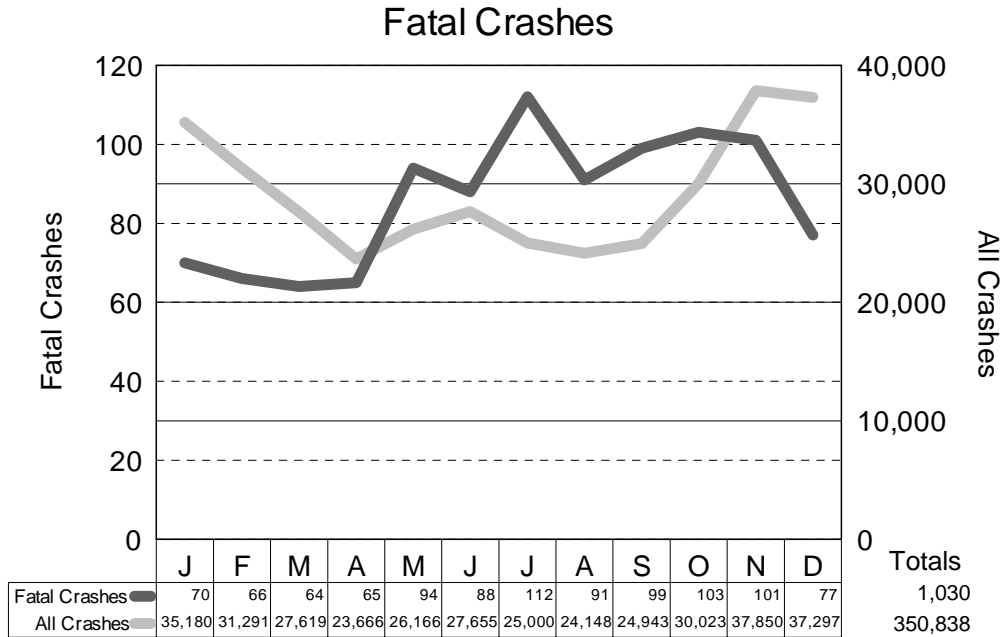


ALL CRASHES INJURY SEVERITY BY MONTH



The charts on this page show the months of April through September are peak months (averaging 22.7%) in terms of the number of crashes involving death or injury as a percent of all crashes in the given month. That is, if a person was in a motor vehicle crash during one of these months there was a higher chance of that crash resulting in death or injury to one of the involved persons than if that crash happened during one of the other months.