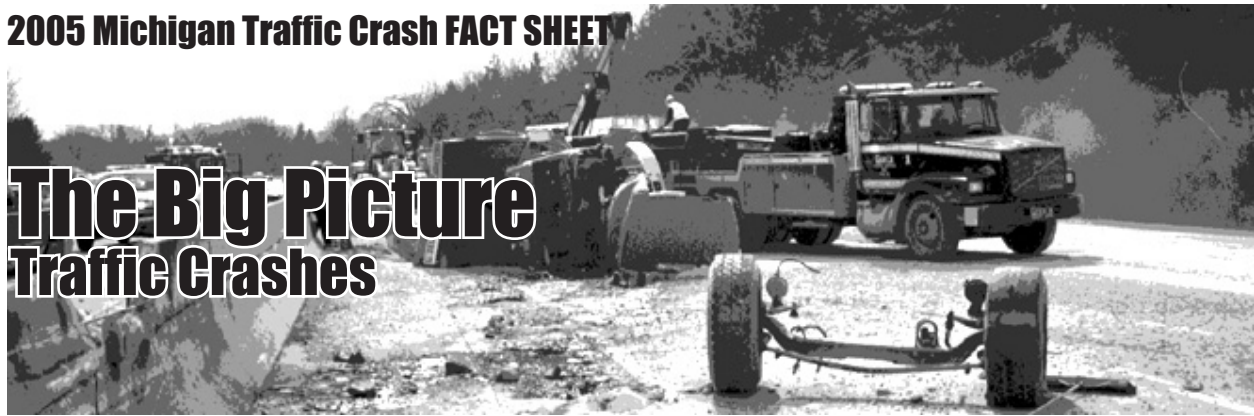


## The Big Picture Traffic Crashes



**The driver, the roadway, and the motor vehicle contribute in some measure to every crash. A preponderance of evidence, however, points to driver error as a chief cause in the majority of crashes.**



There were 350,838 reported crashes, of which 1,030 were fatal, 66,729 were personal injury, and 283,079 were property damage only. Compared to 2004 this is a 5.9 percent decrease in total reported crashes, a 2.4 percent decrease in fatal crashes, an 8.7 percent decrease in personal injury crashes, and a 5.3 percent decrease in property damage crashes.



1,129 persons were killed as a result of the 1,030 fatal crashes for an average of 1.1 deaths per fatal crash.



One out of every 8,964 persons in Michigan was killed in a traffic crash; one out of every 112 persons was injured.



A traffic crash was reported every 1 minute 30 seconds.



One person was killed every 7 hours and 46 minutes as a result of a traffic crash.



One person was injured every 5 minutes and 48 seconds in a traffic crash.



For each person killed, 80.2 persons were injured in crashes.



8,486 persons received A-injuries. An A-injury is incapacitating. It prevents normal activities and generally requires hospitalization.

**The estimated economic loss due to traffic crashes was \$9.1 billion. If costs were spread across the state's population this would translate into a loss of \$899 per state resident.**