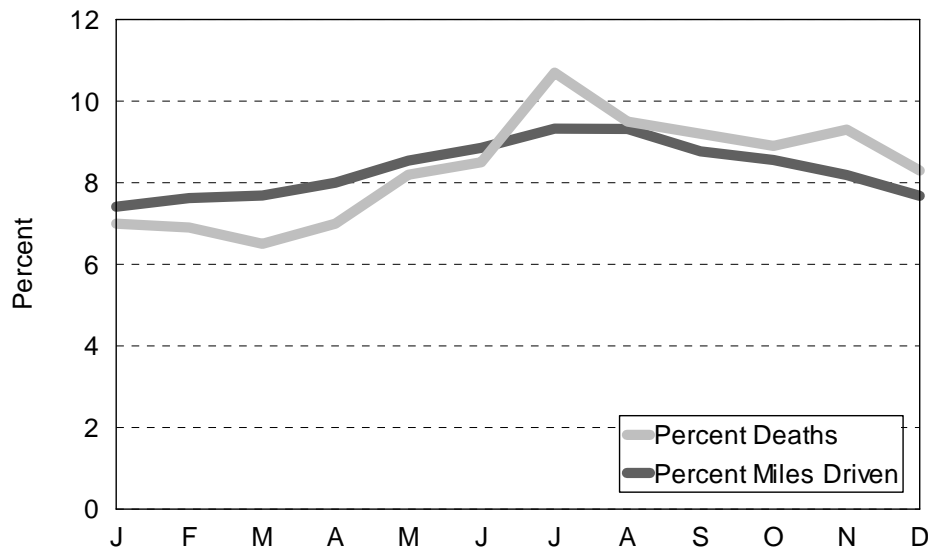


# 5 YEAR

## MOTOR VEHICLE DEATHS AND MILEAGE BY MONTH

Month	TRAFFIC DEATHS					2005 PERCENTAGES	
	2001	2002	2003	2004	2005	Percent Deaths	Percent Miles Driven
January	79	105	97	81	73	6.5	7.43
February	99	101	80	68	77	6.8	7.71
March	102	81	88	63	68	6.0	7.74
April	83	93	100	81	77	6.8	8.02
May	106	112	84	97	105	9.3	8.53
June	113	115	96	106	95	8.4	8.86
July	143	137	132	117	130	11.5	9.30
August	131	110	127	123	96	8.5	9.25
September	143	96	111	116	102	9.0	8.75
October	120	117	122	81	112	9.9	8.55
November	109	102	130	122	110	9.7	8.16
December	100	110	116	104	84	7.4	7.70
Totals	1,328	1,279	1,283	1,159	1,129	100.0	100.00

Average of Percent Deaths & Percent Miles Driven  
2001 - 2005



The chart above shows that the *percent deaths* were lower for the months of January through June than for the other months when compared to the *percent miles driven*.