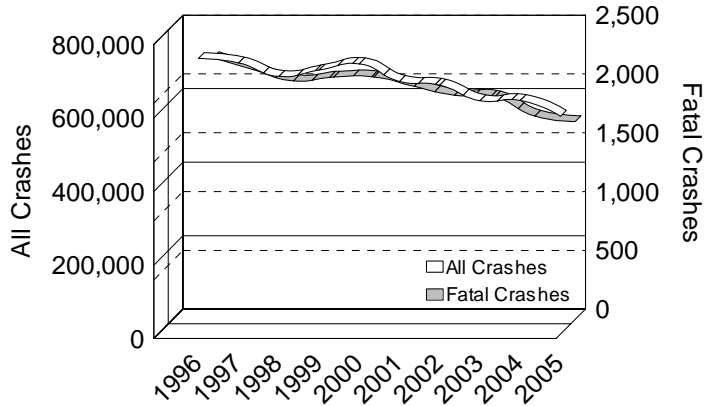


ALL DRIVERS

Number in All and Fatal Crashes

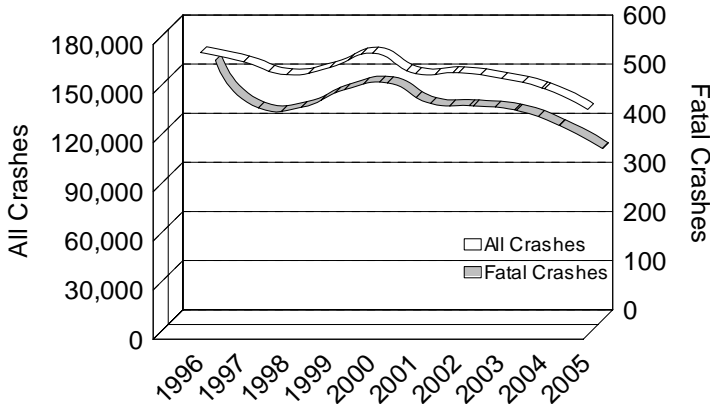


10 YEAR TRENDS (continued)



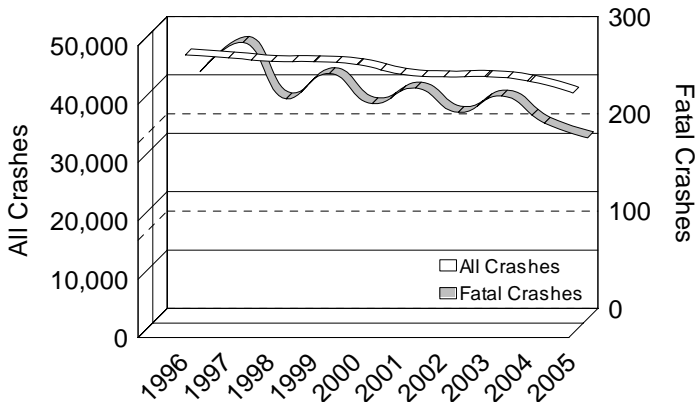
TEEN/YOUNG ADULT DRIVERS

Age 16-24: Number in All and Fatal Crashes



ELDERLY DRIVERS

Age 65-110: Number in All and Fatal Crashes



10 YEAR

ALL DRIVERS		
	All Crashes	Fatal Crashes
1996	750,103	2,226
1997	737,939	2,124
1998	701,056	2,029
1999	718,639	2,061
2000	735,664	2,062
2001	687,836	1,981
2002	677,527	1,907
2003	635,096	1,891
2004	635,913	1,728
2005	592,671	1,682

Driver involvement in all crashes decreased 21.0 percent over the ten-year period.

Driver involvement in fatal crashes decreased 24.4 percent over the ten-year period.

TEEN/YOUNG ADULT DRIVERS		
	All Crashes	Fatal Crashes
1996	172,442	529
1997	166,693	432
1998	158,887	433
1999	163,239	469
2000	172,059	483
2001	159,597	441
2002	160,003	436
2003	156,496	427
2004	150,220	396
2005	137,613	349

Teen/young adult drivers (age 16-24) represent 14.6 percent of the licensed drivers in 2005.

The number of teen/young adult drivers in all crashes has decreased by 20.2 percent since 1996. Their involvement in fatal crashes decreased 34.0 percent during the same time period.

ELDERLY DRIVERS		
	All Crashes	Fatal Crashes
1996	47,695	254
1997	47,190	284
1998	46,582	226
1999	46,519	252
2000	46,023	221
2001	44,393	237
2002	43,923	212
2003	43,967	229
2004	43,146	201
2005	41,140	186

Elderly drivers (age 65-110) represent 14.6 percent of the licensed drivers in 2005.

The number of drivers age 65 and older in all crashes has decreased 13.7 percent since 1996. Their involvement in fatal crashes decreased 26.8 percent during the same time period.