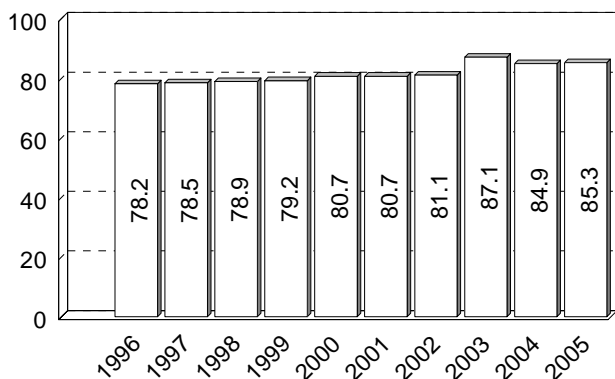


RESTRAINT USAGE

Annual Average Percentage of Occupants

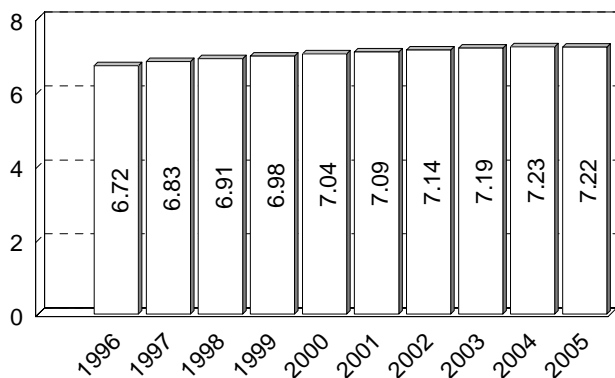


10 YEAR TRENDS (continued)

The percentage of motor vehicle occupants using restraints as reported by police in traffic crashes increased dramatically following implementation of Michigan's safety belt use law in July 1985. Restraint usage has increased 9.1 percent over the last ten years.

DRIVERS IN MICHIGAN

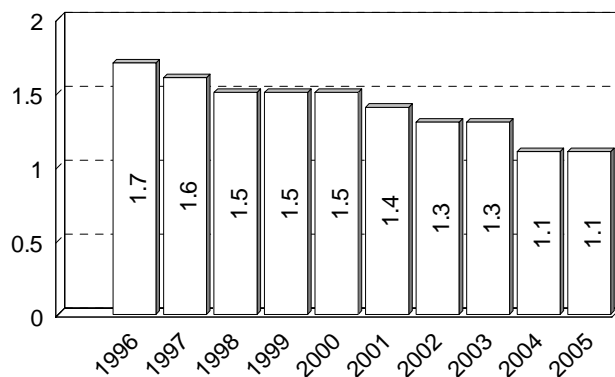
Licensed Drivers in Millions



There were 7,217,208 licensed drivers on Michigan roadways in 2005, an increase of 7.4 percent from 1996.

MILEAGE DEATH RATE

Deaths Per 100 Million Vehicle Miles



The 1.1 death rate in 2005 is a 35.3 percent decrease from the ten-year high of 1.7 in 1996.