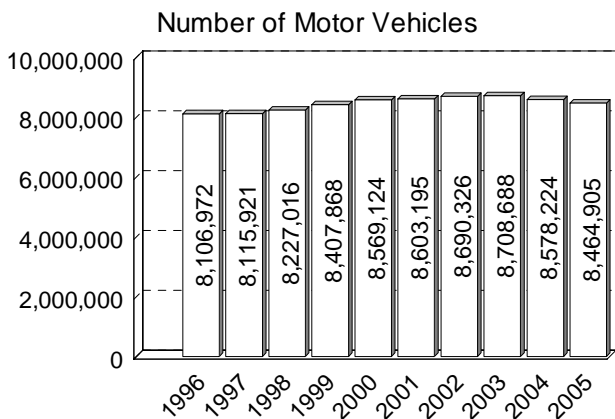


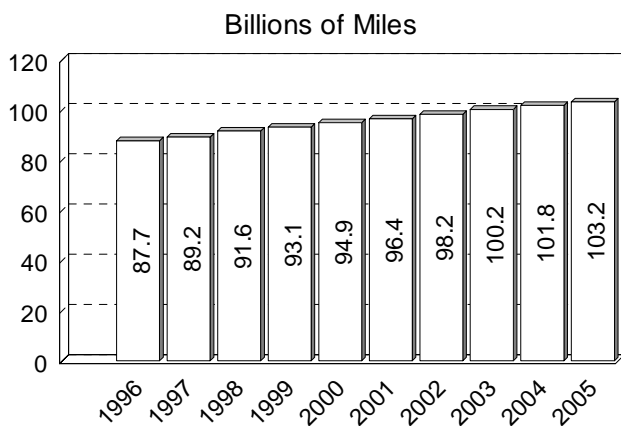
10 YEAR

VEHICLE REGISTRATIONS



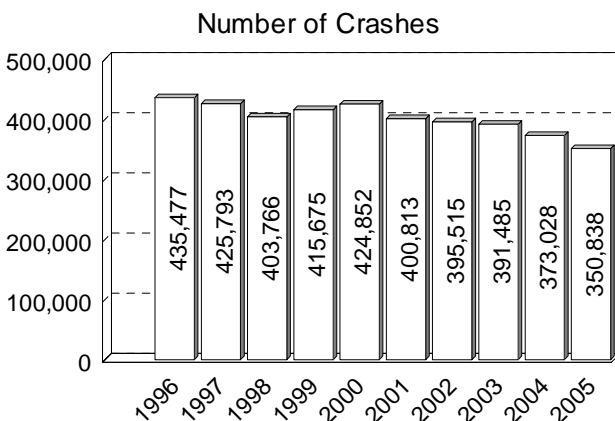
Vehicle registrations dropped for the second time in the ten-year period in 2005.

VEHICLE MILES TRAVELED



Vehicle miles traveled have increased 17.7 percent since 1996, reaching 103.2 billion miles in 2005.

CRASHES



There were 350,838 total crashes statewide in 2005, a 19.4 percent decrease from 1996.