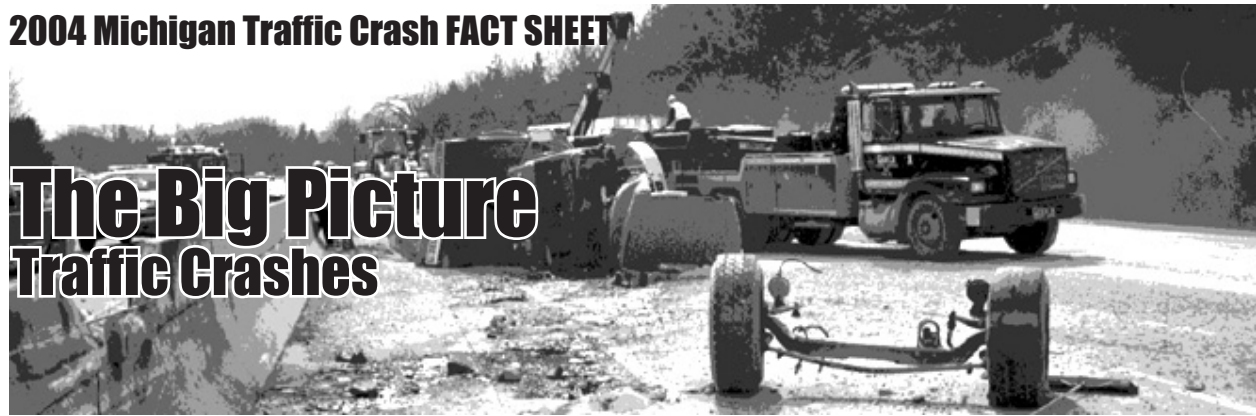


The Big Picture Traffic Crashes



The driver, the roadway, and the motor vehicle contribute in some measure to every crash. A preponderance of evidence, however, points to driver error as a chief cause in the majority of crashes.



There were 373,028 reported crashes, of which 1,055 were fatal, 73,118 were personal injury, and 298,855 were property damage only. Compared to 2003 this is a 4.7 percent decrease in total reported crashes, a 10.0 percent decrease in fatal crashes, a 4.5 percent decrease in personal injury crashes, and a 4.7 percent decrease in property damage crashes.



1,159 persons were killed as a result of the 1,055 fatal crashes for an average of 1.1 deaths per fatal crash.



One out of every 8,725 persons in Michigan was killed in a traffic crash; one out of every 101 persons was injured.



A traffic crash was reported every 1 minute 25 seconds.



One person was killed every 7 hours and 33 minutes as a result of a traffic crash.



One person was injured every 5 minutes and 16 seconds in a traffic crash.



For each person killed, 86.0 persons were injured in crashes.



9,270 persons received A-injuries. An A-injury is incapacitating. It prevents normal activities and generally requires hospitalization.

The estimated economic loss due to traffic crashes was \$9.4 billion. If costs were spread across the state's population this would translate into a loss of \$930 per state resident.