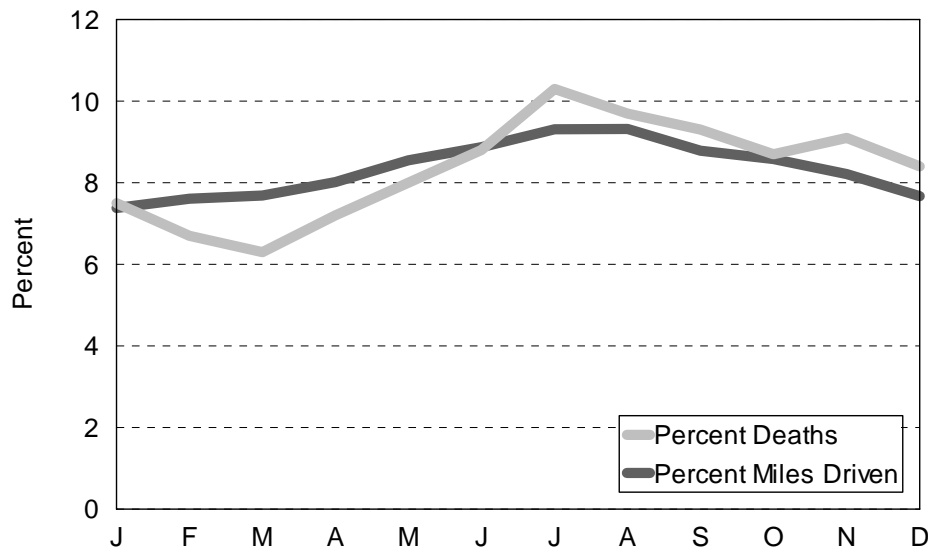


5 YEAR

MOTOR VEHICLE DEATHS AND MILEAGE BY MONTH

Month	TRAFFIC DEATHS					2004 PERCENTAGES	
	2000	2001	2002	2003	2004	Percent Deaths	Percent Miles Driven
January	121	79	105	97	81	7.0	7.39
February	83	99	101	80	68	5.9	7.63
March	70	102	81	88	63	5.4	7.65
April	107	83	93	100	81	7.0	7.98
May	114	106	112	84	97	8.4	8.52
June	136	113	115	96	106	9.1	8.88
July	135	143	137	132	117	10.1	9.35
August	133	131	110	127	123	10.6	9.34
September	135	143	96	111	116	10.0	8.83
October	124	120	117	122	81	7.0	8.58
November	118	109	102	130	122	10.5	8.16
December	106	100	110	116	104	9.0	7.71
Totals	1,382	1,328	1,279	1,283	1,159	100.0	100.00

Average of Percent Deaths & Percent Miles Driven
2000 - 2004



The chart above shows that the *percent deaths* were lower for the months of February, March, April, and May than for other months when compared to the *percent miles driven*.