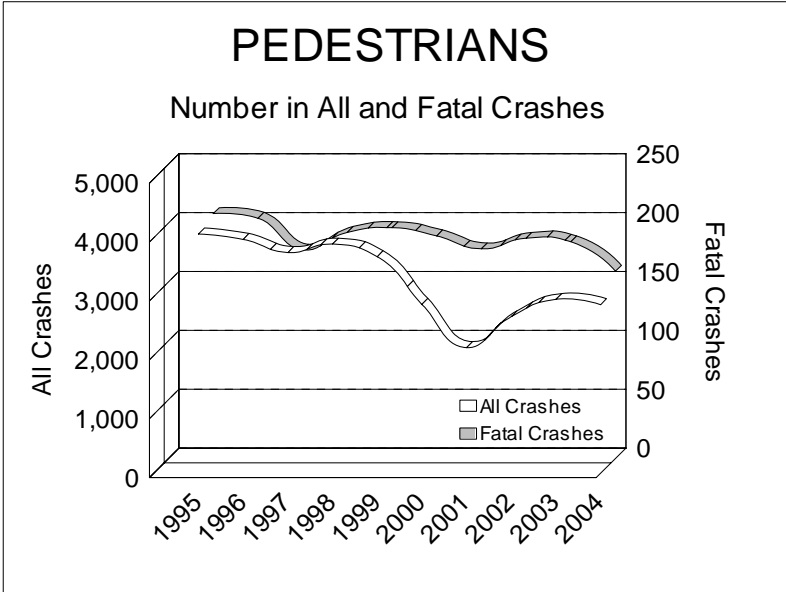
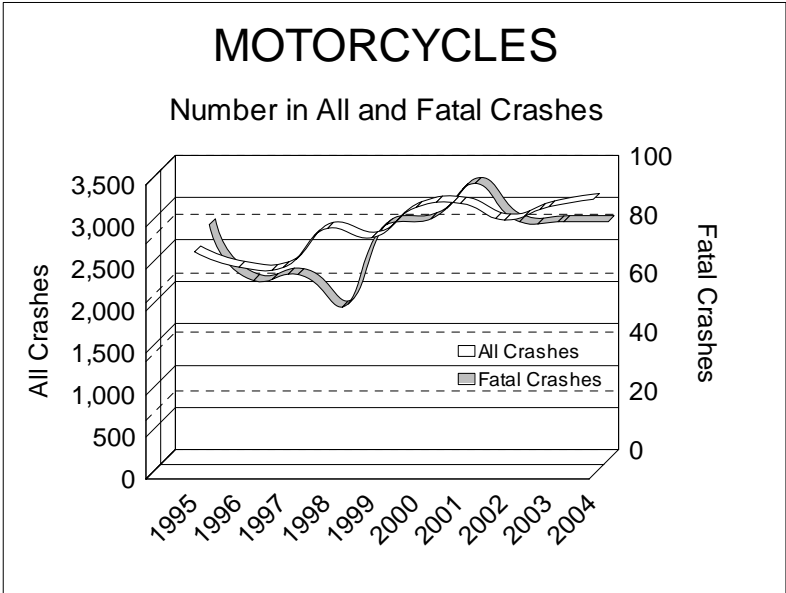
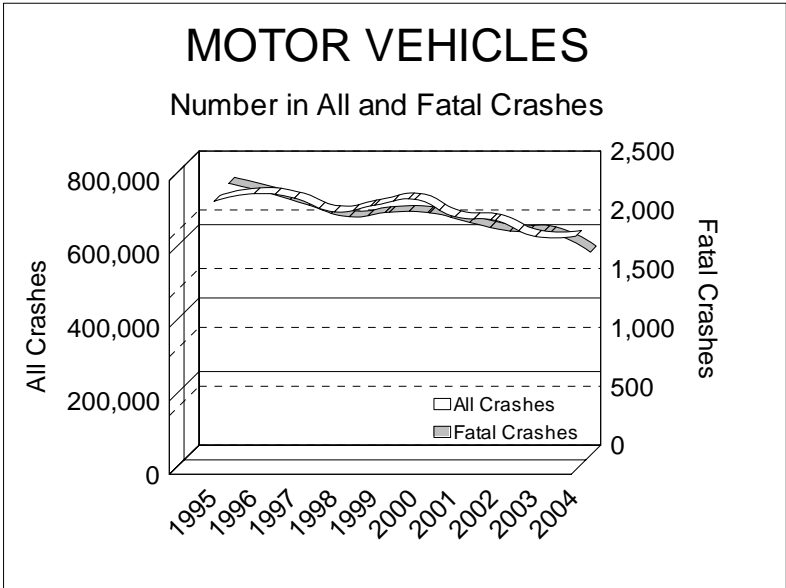


# 10 YEAR TRENDS (continued)



# 10 YEAR

<b>MOTOR VEHICLES</b>		
	All Crashes	Fatal Crashes
1995	730,952	2,313
1996	751,804	2,229
1997	739,538	2,126
1998	702,680	2,029
1999	720,393	2,066
2000	736,219	2,062
2001	689,122	1,981
2002	678,990	1,908
2003	635,767	1,892
2004	635,913	1,728

There were 1,728 motor vehicles involved in fatal crashes in 2004, down 25.3 percent from 1995.

<b>MOTORCYCLES</b>		
	All Crashes	Fatal Crashes
1995	2,651	80
1996	2,468	61
1997	2,465	63
1998	2,931	52
1999	2,820	80
2000	3,180	82
2001	3,228	94
2002	3,030	81
2003	3,187	81
2004	3,276	81

The number of motorcycles involved in fatal crashes has fluctuated over the ten-year period with a high of 94 in 2001.

<b>PEDESTRIANS</b>		
	All Crashes	Fatal Crashes
1995	4,064	208
1996	3,971	204
1997	3,749	177
1998	3,891	192
1999	3,677	196
2000	2,868	189
2001	2,135	178
2002	2,660	187
2003	2,953	184
2004	2,864	159

There were 159 pedestrians involved in fatal crashes in 2004, down 23.6 percent from 1995.