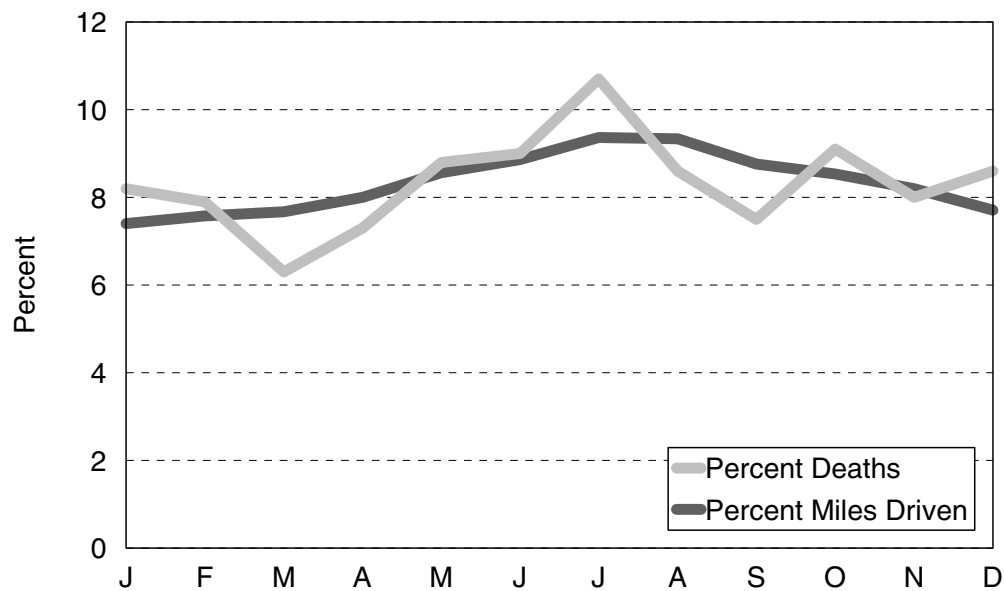


5 YEAR

MOTOR VEHICLE DEATHS AND MILEAGE BY MONTH

Month	TRAFFIC DEATHS					2002 PERCENTAGES	
	1998	1999	2000	2001	2002	Percent Deaths	Percent Miles Driven
January	116	76	121	79	105	8.2	7.40
February	71	84	83	99	101	7.9	7.58
March	97	92	70	102	81	6.3	7.67
April	91	98	107	83	93	7.3	8.00
May	113	125	114	106	112	8.8	8.56
June	120	116	136	113	115	9.0	8.86
July	133	128	135	143	137	10.7	9.37
August	116	160	133	131	110	8.6	9.34
September	123	128	135	143	96	7.5	8.76
October	126	129	124	120	117	9.1	8.53
November	117	130	118	109	102	8.0	8.20
December	144	120	106	100	110	8.6	7.71
Totals	1,367	1,386	1,382	1,328	1,279	100.0	100.0

Percent Deaths & Percent Miles Driven - 2002



The above chart shows that the *percent deaths* were lower for the months of March, April, August, and September than for the other months in 2002 when compared to the *percent miles driven*.