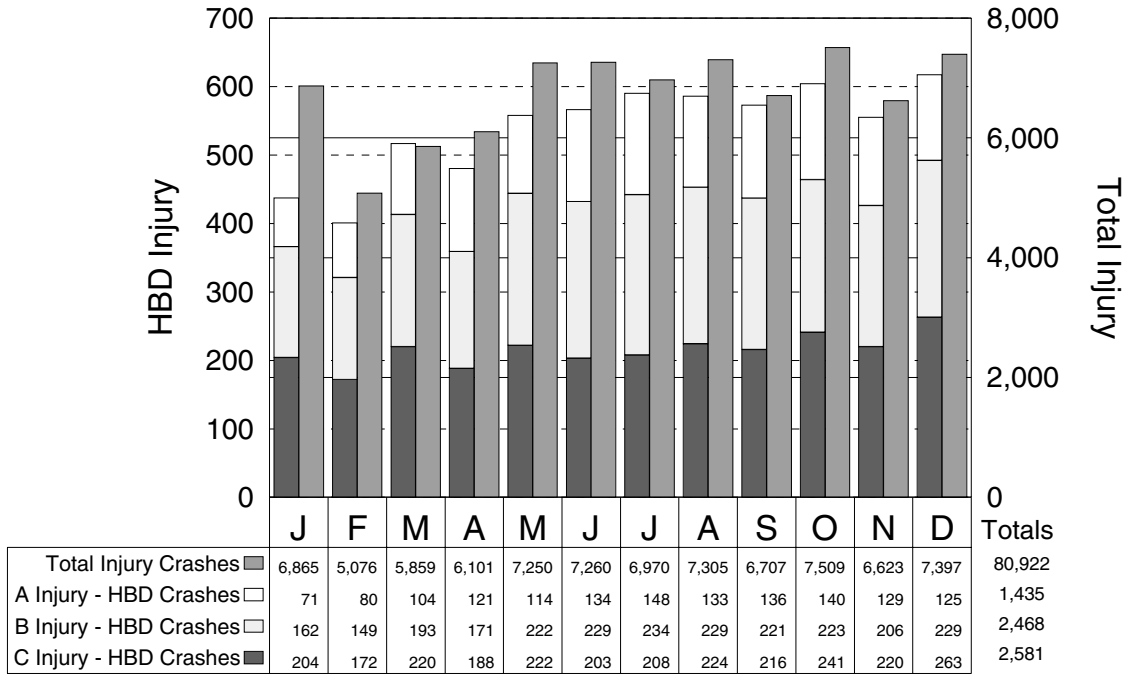


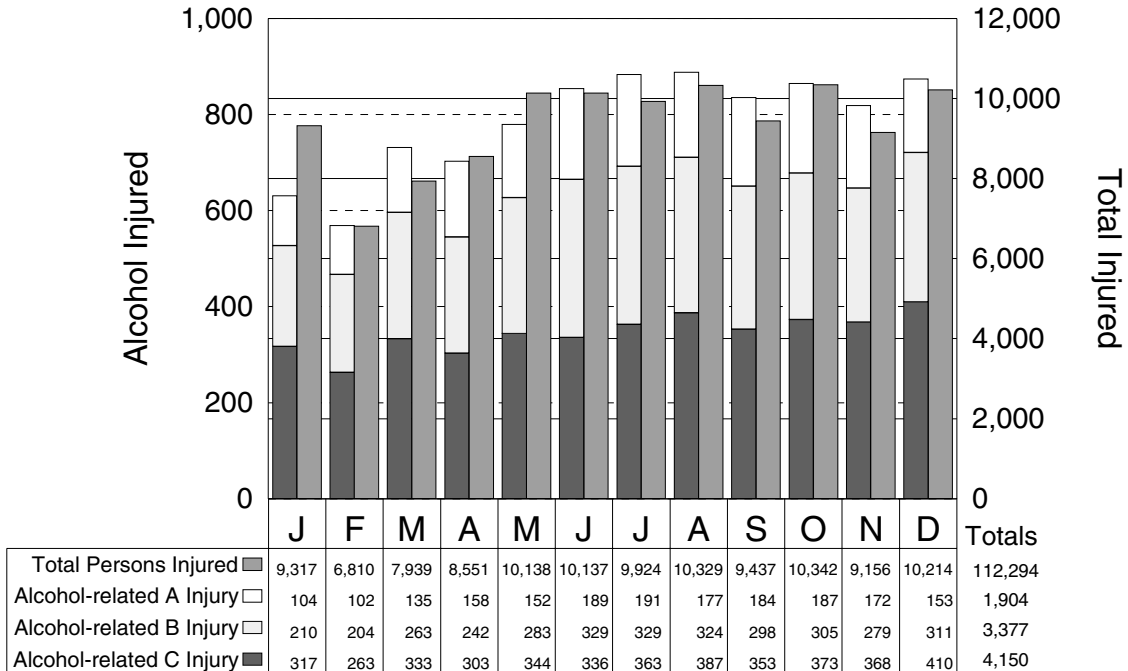
ALCOHOL INVOLVEMENT IN INJURY CRASHES

Alcohol involvement in injury crashes is an important indicator of the alcohol impaired driving problem. In 2001, the highest number of HBD injury crashes occurred in December with 617. The highest proportion of HBD injury crashes occurred in March with 8.8 percent of the injury crashes in that month involving alcohol.

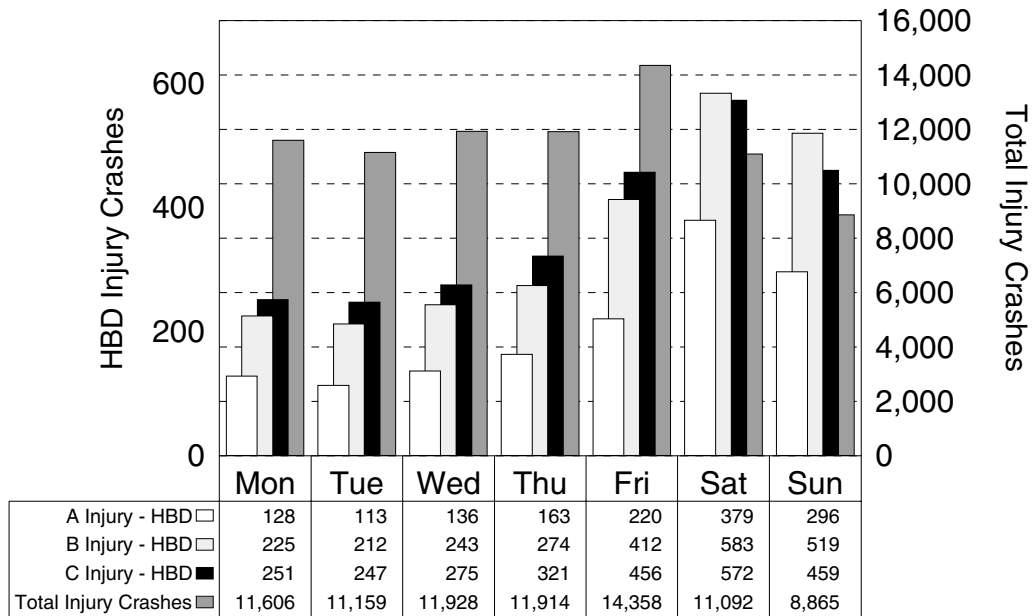
HBD Injury Crashes by Month



Alcohol-related Injuries by Month

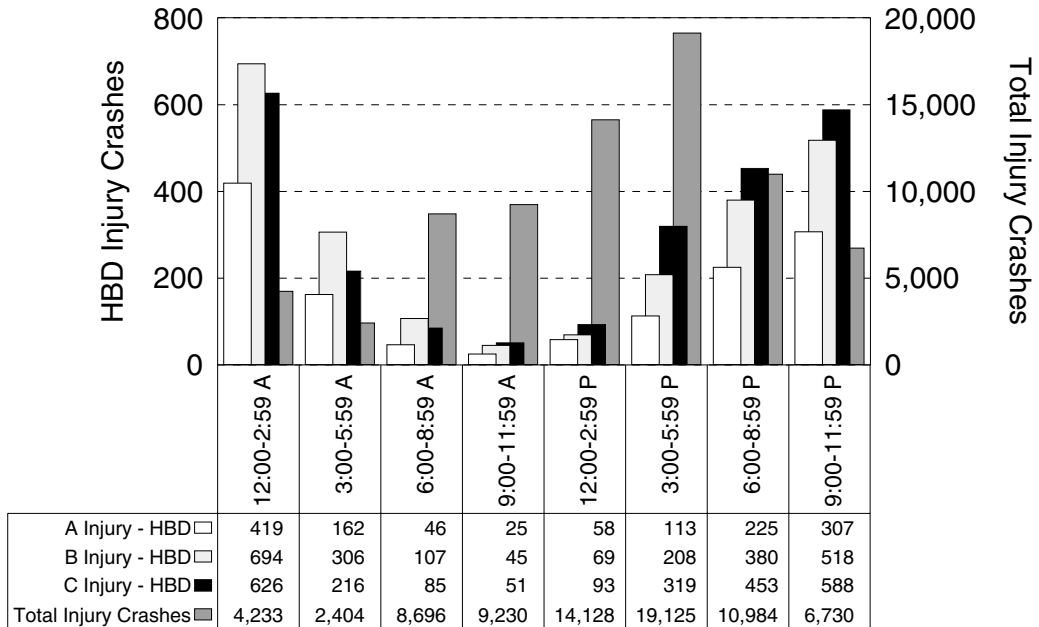


HBD Injury Crashes by Day of Week



HBD injury crashes follow the same basic trends as total crashes through the work week, but the weekend sees a dramatic increase in the proportion of HBD injury crashes to total injury crashes.

HBD Injury Crashes by Time of Day



Total injury crash frequencies peak in the hours between 3:00 PM and 5:59 PM, while HBD injury crash frequencies peak between 12:00 AM and 2:59 AM (a particularly hazardous travel period).