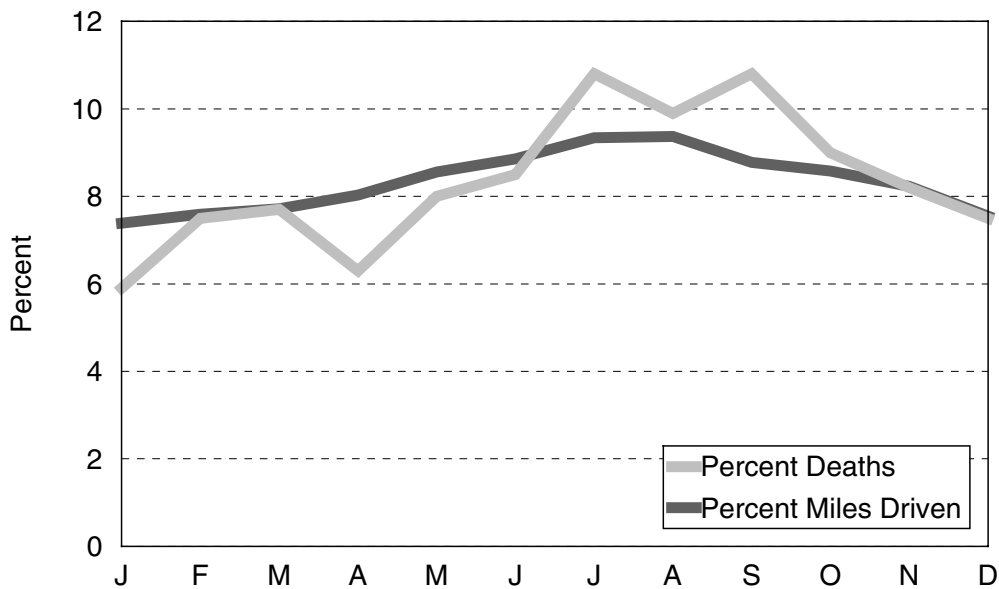


## MOTOR VEHICLE DEATHS AND MILEAGE BY MONTH

Month	TRAFFIC DEATHS					2001 PERCENTAGES	
	1997	1998	1999	2000	2001	Percent Deaths	Percent Miles Driven
January	102	116	76	121	79	5.9	7.39
February	106	71	84	83	99	7.5	7.59
March	85	97	92	70	102	7.7	7.72
April	80	91	98	107	83	6.3	8.03
May	128	113	125	114	106	8.0	8.56
June	140	120	116	136	113	8.5	8.86
July	166	133	128	135	143	10.8	9.34
August	130	116	160	133	131	9.9	9.37
September	128	123	128	135	143	10.8	8.78
October	134	126	129	124	120	9.0	8.58
November	125	117	130	118	109	8.2	8.23
December	122	144	120	106	100	7.5	7.55
Totals	1,446	1,367	1,386	1,382	1,328	100.0	100.0

Percent Deaths & Percent Miles Driven



The above chart shows that the *percent deaths* were lower for the months of January, April, May, and June than for the other months in 2001 when compared to the *percent miles driven*.