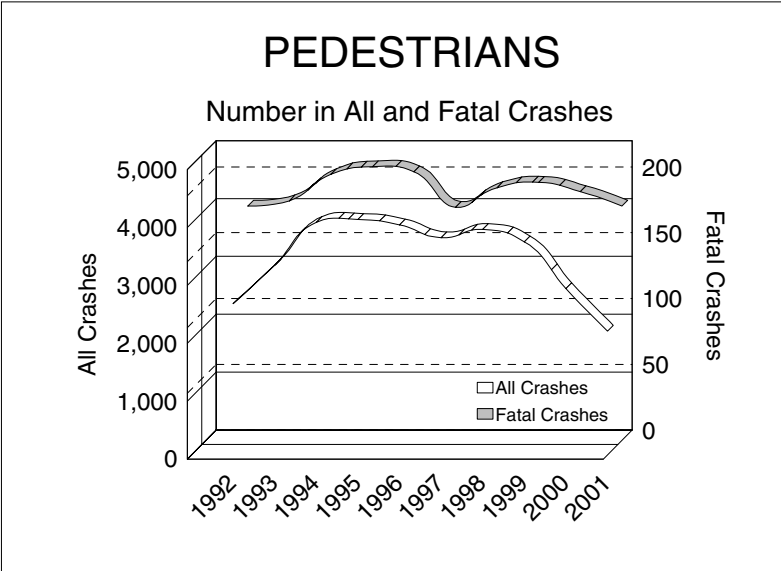
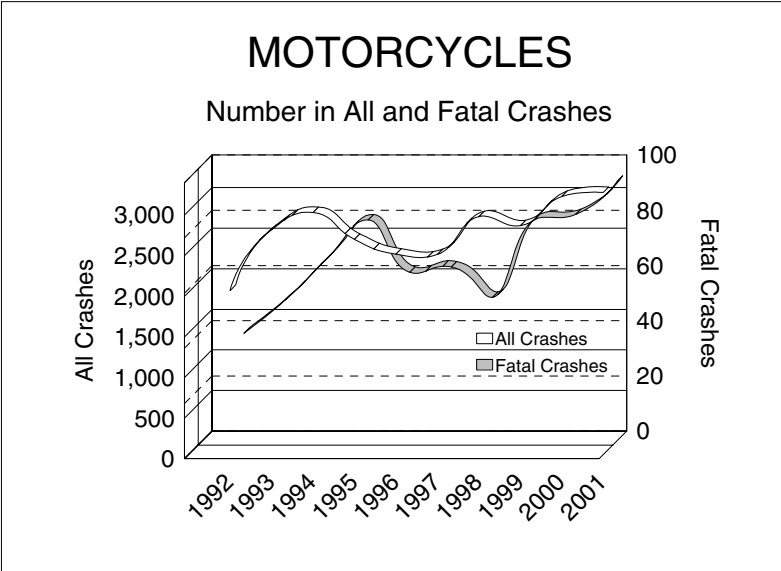
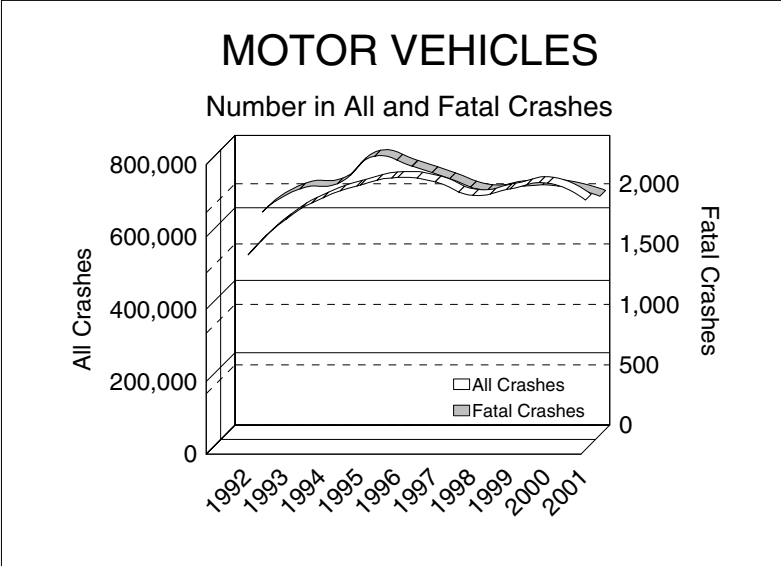


# 10 YEAR TRENDS (continued)



# 10 YEAR

MOTOR VEHICLES		
	All Crashes	Fatal Crashes
1992	538,025	1,851
1993	635,711	2,042
1994	695,423	2,084
1995	730,952	2,313
1996	751,804	2,229
1997	739,538	2,126
1998	702,680	2,029
1999	720,393	2,066
2000	736,219	2,062
2001	689,122	1,981

There were 1,981 motor vehicles involved in fatal crashes in 2001, down 3.9 percent from 2000.

MOTORCYCLES		
	All Crashes	Fatal Crashes
1992	2,022	39
1993	2,768	51
1994	2,982	66
1995	2,651	80
1996	2,468	61
1997	2,465	63
1998	2,931	52
1999	2,820	80
2000	3,180	82
2001	3,228	94

The number of motorcycles involved in fatal crashes has fluctuated over the ten-year period with a high of 94 in 2001.

PEDESTRIANS		
	All Crashes	Fatal Crashes
1992	2,609	178
1993	3,275	182
1994	4,014	202
1995	4,064	208
1996	3,971	204
1997	3,749	177
1998	3,891	192
1999	3,677	196
2000	2,868	189
2001	2,135	178

**Due to data processing errors ~1,600 pedestrians and ~1,600 bicyclists are incorrectly identified as drivers. Comparison to prior years of pedestrian and bicyclist data must take this into account.**

There were 178 pedestrians involved in fatal crashes in 2001, down 5.8 percent from 2000.