

1998 Michigan Traffic Crash FACT SHEET



Age

CHILDREN

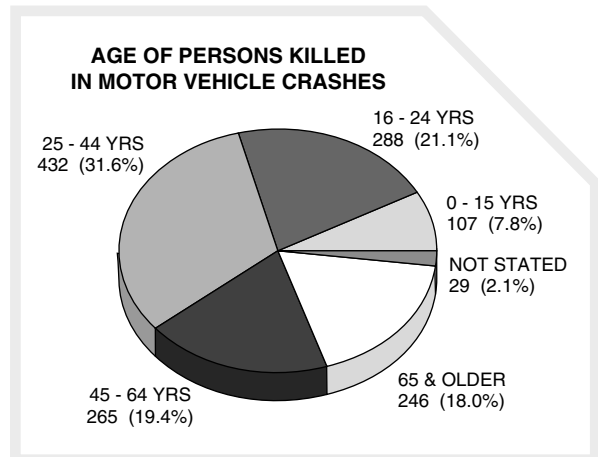
0-15 The number one cause of accidental death for children ages 0-15 in Michigan is motor vehicle crashes.

0-15 107 children (0-15 years old) died, and 12,097 children were injured in traffic crashes.

0-15 59.8 percent of children ages 0-15 killed in traffic crashes were motor vehicle passengers.

0-15 Children accounted for 18.6 percent of the pedestrians killed in Michigan in 1998, and 35.7 percent of all pedestrian injuries.

0-15 According to figures provided by the Michigan Department of Community Health, accidental death for children in motor vehicle crashes routinely outpaces the next two most frequent causes: fire and drowning.



TEENS/ YOUNG ADULTS

16-24 Teenagers and young adults ages 16-24 are disproportionately involved in motor vehicle crashes.

16-24 288 persons (16-24 years old) were killed in traffic crashes, of which 192 (66.7%) were drivers. The 16-24 age group accounted for almost one fifth of all traffic deaths.

16-24 In addition 33,561 teenagers and young adults were injured in traffic crashes.

16-24 The 16-24 age group represented 15.6 percent of Michigan's active driving population, yet drivers in this group were involved in 22.7 percent of all crashes and in 21.3 percent of all fatal crashes.

16-24 According to the Michigan Department of Community Health, four out of five accidental deaths for this age group are due to motor vehicle crashes.

ELDERLY

65+ Drivers age 65 and older made up 13.3 percent of Michigan's active driving population. They were involved in 6.6 percent of all crashes and 11.1 percent of the fatal crashes.

65+ 246 persons (65 and older) were killed in traffic crashes, of which 187 (76.0%) were drivers.

65+ In addition 9,535 persons age 65 and older were injured in traffic crashes.

65+ 22.7 percent of the pedestrians killed in Michigan in 1998 were age 65 and older; 5.3 percent of the pedestrians injured were age 65 and older.

