

# 1997 Michigan Traffic Crash FACT SHEET



## CHILDREN

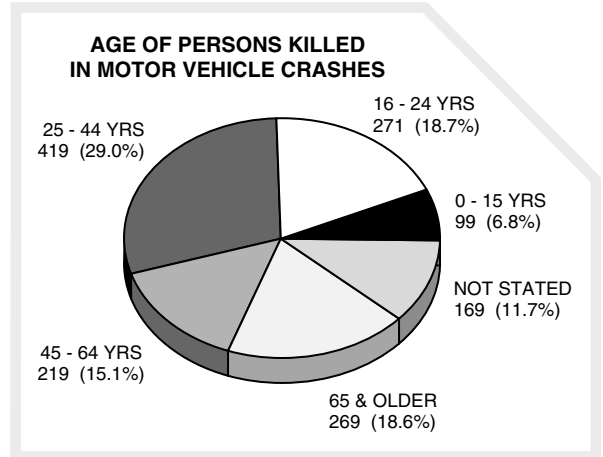
**0-15** The number one cause of accidental death for children ages 0-15 in Michigan is motor vehicle crashes.

**0-15** 99 children (0-15 years old) died, and 11,680 children were injured in traffic crashes.

**0-15** 63.6 percent of children ages 0-15 killed in traffic crashes were motor vehicle passengers.

**0-15** Children accounted for 15.6 percent of the pedestrians killed in Michigan in 1997, and 37.6 percent of all pedestrian injuries.

**0-15** According to figures provided by the Michigan Department of Community Health, accidental death for children in motor vehicle crashes routinely outpaces the next two most frequent causes: fire and drowning.



## TEENS/ YOUNG ADULTS

**16-24** Teenagers and young adults ages 16-24 are disproportionately involved in motor vehicle crashes.

**16-24** 271 persons (16-24 years old) were killed in traffic crashes, of which 202 (74.5%) were drivers. The 16-24 age group accounted for almost one fifth of all traffic deaths.

**16-24** In addition 34,271 teenagers and young adults were injured in traffic crashes.

**16-24** The 16-24 age group represented 15.5 percent of Michigan's active driving population, yet drivers in this group were involved in 22.6 percent of all crashes and in 20.3 percent of all fatal crashes.

**16-24** According to the Michigan Department of Community Health, five out of six accidental deaths for this age group are due to motor vehicle crashes.

## ELDERLY

**65+** Drivers age 65 and older made up 13.3 percent of Michigan's active driving population. They were involved in 6.4 percent of all crashes and 13.4 percent of the fatal crashes.

**65+** 269 persons (65 and older) were killed in traffic crashes, of which 212 (78.8%) were drivers.

**65+** In addition 9,543 persons age 65 and older were injured in traffic crashes.

**65+** 18.6 percent of the pedestrians killed in Michigan in 1997 were age 65 and older; 5.9 percent of the pedestrians injured were age 65 and older.

