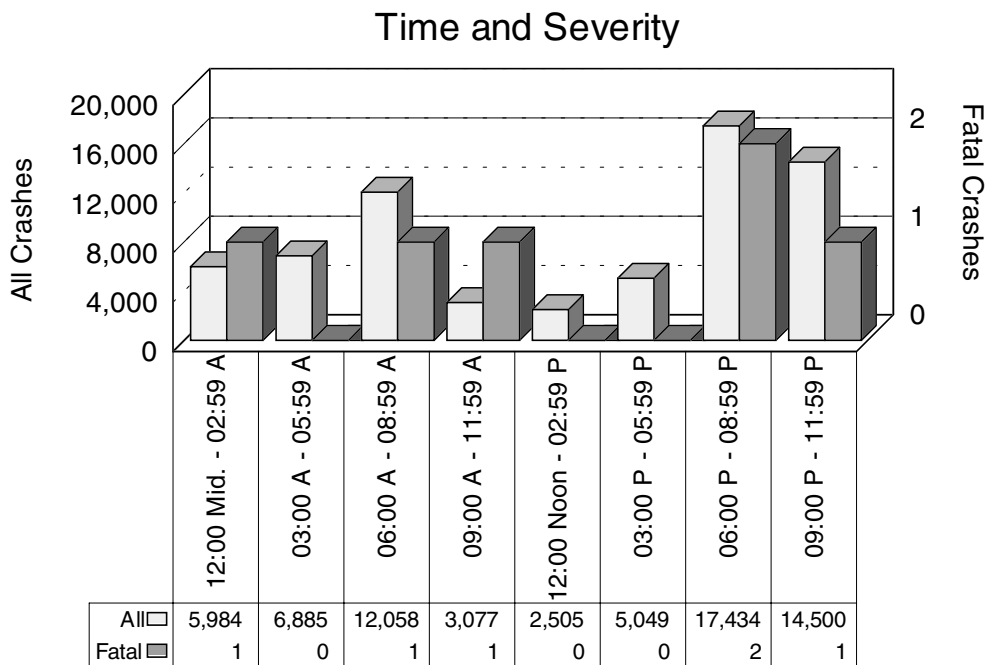


LIGHT CONDITION AND TIME OF DAY IN MOTOR VEHICLE-DEER CRASHES

LIGHT CONDITION	All Crashes		Fatal Crashes		Injury Crashes			PDO Crashes
	Number	% of Total	Number	% of Fatal	A	B	C	
Daylight	13,156	19.3	4	66.7	47	178	305	12,622
Dawn	5,499	8.1	0	0.0	5	41	92	5,361
Dusk	3,546	5.2	0	0.0	8	42	52	3,444
Dark - Lighted	2,044	3.0	0	0.0	3	16	40	1,985
Dark - Unlighted	43,279	63.4	2	33.3	77	292	697	42,211
Other/Unknown	709	1.0	0	0.0	0	4	10	695
Totals	68,233	100.0	6	100.0	140	573	1,196	66,318

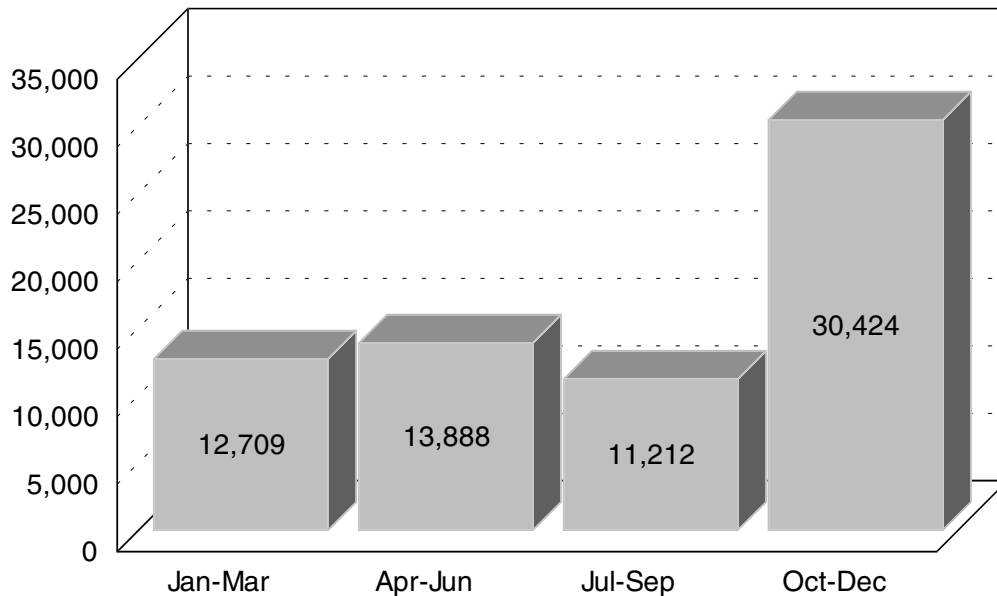
Four of the six fatal deer crashes in Michigan in 1996 occurred in daylight conditions. All motor vehicle-deer involved/associated crashes peaked during the 6:00 - 8:59 PM time period. There were 2 fatal deer crashes during this time period.



MONTHLY AND SEASONAL RATES FOR MOTOR VEHICLE-DEER CRASHES

MONTH	All Crashes		Fatal Crashes		Injury Crashes			PDO Crashes
	Number	% of Total	Number	% of Fatal	A	B	C	
January	4,987	7.3	0	0.0	2	24	80	4,881
February	3,643	5.3	0	0.0	7	21	61	3,554
March	4,079	6.0	0	0.0	7	14	68	3,990
April	3,992	5.9	1	16.7	8	24	55	3,904
May	4,701	6.9	1	16.7	14	50	101	4,535
June	5,195	7.6	1	16.7	16	88	106	4,984
July	3,804	5.6	0	0.0	14	50	81	3,659
August	2,950	4.3	0	0.0	21	46	56	2,827
September	4,458	6.5	0	0.0	10	53	79	4,316
October	10,199	14.9	3	50.0	20	76	182	9,918
November	13,329	19.5	0	0.0	15	96	232	12,986
December	6,896	10.1	0	0.0	6	31	95	6,764
Totals	68,233	100.0	6	100.0	140	573	1,196	66,318

All Motor Vehicle-Deer Crashes



Crashes involving deer occurred most frequently during the second quarter (20.4%) and the fourth quarter (44.6%) of the year for a total of 65 percent of all reported motor vehicle-deer collisions.

REPORTED STATEWIDE MOTOR VEHICLE-DEER CRASHES BY COUNTY IN MICHIGAN

COUNTY	All	Fatal	Injury	Property Damage	Inter-state	US Route	State Route	Local Street	Persons Killed	Persons Injured
Alcona	604	0	18	586	0	78	116	410	0	23
Alger	242	0	8	234	0	27	123	92	0	9
Allegan	1,142	0	38	1,104	76	74	173	819	0	43
Alpena	578	0	17	561	0	81	116	381	0	19
Antrim	629	0	15	614	0	117	120	392	0	20
Arenac	490	1	13	476	32	134	30	294	1	16
Baraga	322	0	8	314	0	117	59	146	0	10
Barry	1,566	0	39	1,527	0	0	520	1,046	0	46
Bay	388	0	10	378	24	13	73	278	0	10
Benzie	304	0	6	298	0	80	39	185	0	8
Berrien	751	0	35	716	113	149	66	423	0	42
Branch	986	0	44	942	86	74	61	765	0	60
Calhoun	1,895	0	43	1,852	224	0	282	1,389	0	54
Cass	887	0	31	856	0	64	288	535	0	37
Charlevoix	628	0	19	609	0	181	91	356	0	27
Cheboygan	440	0	11	429	62	41	102	235	0	13
Chippewa	586	0	15	571	37	0	241	308	0	16
Clare	797	0	18	779	0	182	143	472	0	20
Clinton	1,002	0	19	983	122	104	50	726	0	23
Crawford	410	0	6	404	63	4	153	190	0	7
Delta	1,183	0	29	1,154	0	305	215	663	0	32
Dickinson	876	1	15	860	0	215	285	376	1	20
Eaton	1,468	0	40	1,428	144	40	392	892	0	44
Emmet	547	0	6	541	0	132	45	370	0	9
Genesee	1,202	0	40	1,162	124	23	153	902	0	44
Gladwin	685	0	18	667	0	0	274	411	0	20
Gogebic	135	0	1	134	0	73	18	44	0	1
Grand Traverse	511	0	18	493	0	53	80	378	0	23
Gratiot	786	0	14	772	0	125	132	529	0	16
Hillsdale	1,027	0	25	1,002	0	112	164	751	0	26
Houghton	266	0	9	257	0	60	88	118	0	12
Huron	1,332	0	23	1,309	0	0	496	836	0	25
Ingham	1,366	2	29	1,335	108	93	179	986	2	34
Ionia	1,202	0	29	1,173	83	0	274	845	0	34
Iosco	641	0	24	617	0	67	202	372	0	26
Iron	525	0	12	513	0	149	189	187	0	13
Isabella	1,230	0	25	1,205	0	141	165	924	0	25
Jackson	1,995	0	54	1,941	92	129	322	1,452	0	60
Kalamazoo	1,511	0	38	1,473	65	123	111	1,212	0	43
Kalkaska	354	0	8	346	0	41	97	216	0	10
Kent	2,223	0	63	2,160	135	115	377	1,596	0	71
Keweenaw	23	0	2	21	0	6	5	12	0	2
Lake	379	0	12	367	0	84	80	215	0	14
Lapeer	1,326	0	45	1,281	94	0	262	970	0	46
Leelanau	321	0	8	313	0	0	122	199	0	11
Lenawee	884	0	29	855	0	194	190	500	0	32

REPORTED STATEWIDE MOTOR VEHICLE-DEER CRASHES BY COUNTY IN MICHIGAN (Continued)

COUNTY	All	Fatal	Injury	Property Damage	Inter- state	US Route	State Route	Local Street	Persons Killed	Persons Injured
Livingston	1,334	0	46	1,288	114	70	165	985	0	52
Luce	208	0	6	202	0	0	122	86	0	7
Mackinac	566	0	17	549	88	118	165	195	0	20
Macomb	599	0	31	568	21	0	105	473	0	34
Manistee	527	0	7	520	0	105	131	291	0	9
Marquette	670	0	28	642	0	165	120	385	0	31
Mason	854	0	21	833	0	260	17	577	0	23
Mecosta	1,739	0	30	1,709	0	303	336	1,100	0	31
Menominee	1,227	0	32	1,195	0	396	148	683	0	37
Midland	937	0	25	912	0	69	91	777	0	31
Missaukee	555	0	10	545	0	0	173	382	0	12
Monroe	333	0	21	312	36	75	20	202	0	21
Montcalm	1,623	0	35	1,588	0	52	482	1,089	0	42
Montmorency	287	0	7	280	0	0	129	158	0	7
Muskegon	699	0	21	678	16	76	66	541	0	22
Newaygo	936	0	12	924	0	0	277	659	0	16
Oakland	1,500	0	62	1,438	132	14	159	1,195	0	68
Oceana	555	0	19	536	0	132	40	383	0	21
Ogemaw	811	0	14	797	91	0	226	494	0	17
Ontonagon	396	0	10	386	0	99	177	120	0	10
Osceola	966	0	27	939	0	219	143	604	0	33
Oscoda	299	0	1	298	0	0	121	178	0	1
Otsego	238	0	3	235	41	0	25	172	0	5
Ottawa	1,143	0	36	1,107	99	51	109	884	0	44
Presque Isle	472	1	10	461	0	126	106	240	1	11
Roscommon	541	0	15	526	54	54	95	338	0	18
Saginaw	1,039	0	40	999	42	0	286	711	0	45
Sanilac	1,354	1	38	1,315	0	0	447	907	1	45
Schoolcraft	333	0	11	322	0	106	134	93	0	15
Shiawassee	914	0	33	881	107	0	202	605	0	37
St. Clair	923	0	36	887	105	0	145	673	0	43
St. Joseph	758	0	24	734	0	103	177	478	0	27
Tuscola	1,052	0	21	1,031	0	0	320	732	0	26
Van Buren	827	0	40	787	104	0	201	522	0	54
Washtenaw	1,455	0	47	1,408	92	139	130	1,094	0	55
Wayne	361	0	27	334	52	19	24	266	0	35
Wexford	524	0	17	507	0	62	200	262	0	20
UNKNOWN	33	0	0	33	0	0	0	33	0	0
Totals	68,233	6	1,909	66,318	2,878	6,613	13,777	44,965	6	2,221

